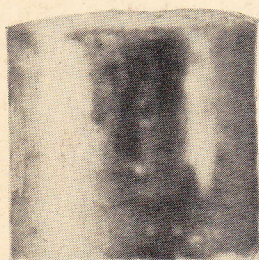


NUCLEONICS

September 1952

A SAMPLE FUEL PIECE — BEFORE METALLURGICAL TREATMENT



Before insertion in reactor ↑

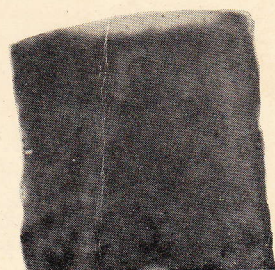
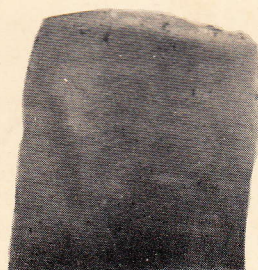
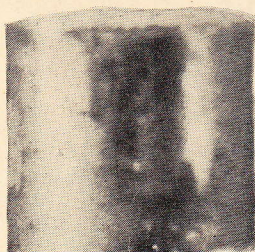


After same exposure in reactor ↑



After twice as much exposure ↑

SAME TYPE SAMPLE FUEL PIECE — AFTER METALLURGICAL TREATMENT



PHYSICAL CHANGES DUE TO
THE RADIATION IN A REACTOR

See page 11