

A Sample Text for Proceedings Preparation

Firstname LASTNAME¹⁾, Firstname M. LASTNAME^{1,2)} and Carl F. GAUSS¹⁾

¹⁾University of Plasma, Nagoya 000-0000, Japan

²⁾National Institute of Kakuyugo, Tokyo 000-0000, Japan

The purpose of Rapid Communications section is rapid publication of new research results which have impact in one of the fields covered by Plasma and Fusion Research. Authors should download the sample text and prepare their manuscript in the same format. The publication will be determined by only one review.

Keywords: about five keywords or phrases separated by commas, journal-page image, sample text, Plasma and Fusion Research, L^AT_EX version

The articles intended to be published in Rapid Communications section should be short without attempting the completeness as required for a regular paper. The length of the manuscript must not exceed 2 pages in this format. The paper size must be A4 (21.0 cm × 29.7 cm).

Authors using L^AT_EX should use the pfr package provided by the society:

```
\usepackage{pfr}
```

Text should be typeset in Times. The title heading should be in Times Bold. These fonts can be accessed by using either the standard times, mathptmx or recent txfonts package, as in

```
\documentclass
[a4paper,twocolumn,fleqn]{article}
\usepackage{amsmath} % optional
\usepackage{txfonts} % or times
\usepackage{graphicx} % optional
\usepackage{pfr}
\begin{document}
...
```

The default Computer Modern fonts may be used as a last resort.

The document should be submitted in PDF format (or PostScript format). Any fonts other than the standard PostScript fonts (such as Times and Symbol) must be embedded in the document, and don't use national (e.g. Japanese) fonts.

The manuscript must include a concise abstract (less than 200 words), a complete list of references, figures and tables with captions. Each author's name is given in the order of first name, initial of optional middle name and last name, as in Carl F. GAUSS. References are cited as [1], [2, 3], and [1, 2, 3], and are listed at the end of the manuscript, *not* preceded by a header such as "References." See also Fig. 1 and its caption.

Equations should be indented by 10 mm from the left

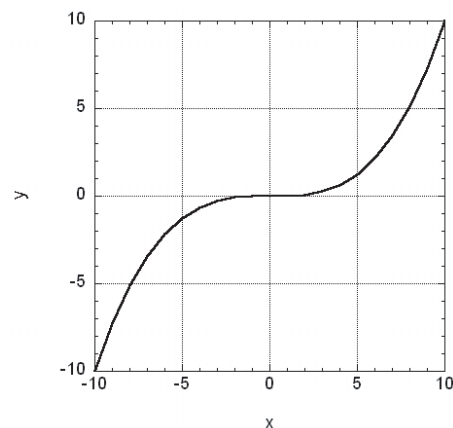


Fig. 1 Sample figure. Letters in figures must be sufficiently large.

margin, as is

$$\tilde{f}(\mathbf{x}, \mu, E) = -\boldsymbol{\rho} \cdot \nabla f_M(\mathbf{x}, E). \quad (1)$$

Vector expressed by a Greek font should be written in Greek Bold; e.g., $\boldsymbol{\rho} = \mathbf{b} \times \mathbf{v}_\perp / \Omega$. For equations separated into multiple lines, the equation number should appear only on the last line.

- [1] M. D. Kruskal and R. M. Kulsrud, Phys. Fluids **1**, 265 (1958).
- [2] L. Spitzer, Jr., *Physics of Fully Ionized Gases* (Interscience Publishers, New York, 1959) p. 20.
- [3] S. Tanaka, to be published in Jpn. J. Appl. Phys. **22** (1983).