



INTERNATIONAL ATOMIC ENERGY AGENCY

18th IAEA Fusion Energy Conference  
Sorrento, Italy, 4 to 10 October 2000

IAEA-CN-77/THP1/19

## NATIONAL INSTITUTE FOR FUSION SCIENCE

### Theory of Dynamics in Long Pulse Helical Plasmas

Itoh, K., Sanuki, H., Toda, S., Itoh, S.-I., Yagi, M.,  
Fukuyama, A., Yokoyama, M.

(Received - Sep. 1, 2000 )

NIFS-647

Sep. 2000

This report was prepared as a preprint of work performed as a collaboration research of the National Institute for Fusion Science (NIFS) of Japan. This document is intended for information only and for future publication in a journal after some rearrangements of its contents.

Inquiries about copyright and reproduction should be addressed to the Research Information Center, National Institute for Fusion Science, Oroshi-cho, Toki-shi, Gifu-ken 509-02 Japan.

## RESEARCH REPORT NIFS Series

This is a preprint of a paper intended for presentation at a scientific meeting. Because of the provisional nature of its content and since changes of substance or detail may have to be made before publication, the preprint is made available on the understanding that it will not be cited in the literature or in any way be reproduced in its present form. The views expressed and the statements made remain the responsibility of the named author(s); the views do not necessarily reflect those of the government of the designating Member State(s) or of the designating organization(s). In particular, neither the IAEA nor any other organization or body sponsoring this meeting can be held responsible for any material reproduced in this preprint.

TOKI, JAPAN



INTERNATIONAL ATOMIC ENERGY AGENCY

**18th IAEA Fusion Energy Conference  
Sorrento, Italy, 4 to 10 October 2000**

---

**IAEA-CN-77/THP1/19**

**Theory of Dynamics in Long Pulse Helical Plasmas**

K. Itoh<sup>1</sup>, H. Sanuki<sup>1</sup>, S. Toda<sup>1</sup>, S.-I. Itoh<sup>2</sup>, M. Yagi<sup>2</sup>, A. Fukuyama<sup>3</sup>, M. Yokoyama<sup>1</sup>

<sup>1</sup>National Institute for Fusion Science, Toki 509-5292, Japan

<sup>2</sup>Research Institute for Applied Mechanics, Kyushu University, Kasuga 816-8580, Japan

<sup>3</sup>Department of Nuclear Engineering, Kyoto University, Kyoto 606-8501, Japan

---

This is a preprint of a paper intended for presentation at a scientific meeting. Because of the provisional nature of its content and since changes of substance or detail may have to be made before publication, the preprint is made available on the understanding that it will not be cited in the literature or in any way be reproduced in its present form. The views expressed and the statements made remain the responsibility of the named author(s); the views do not necessarily reflect those of the government of the designating Member State(s) or of the designating organization(s). In particular, neither the IAEA nor any other organization or body sponsoring this meeting can be held responsible for any material reproduced in this preprint.

# Theory of Dynamics in Long Pulse Helical Plasmas

K. Itoh<sup>1</sup>, H. Sanuki<sup>1</sup>, S. Toda<sup>1</sup>, S.-I. Itoh<sup>2</sup>, M. Yagi<sup>2</sup>, A. Fukuyama<sup>3</sup>, M. Yokoyama<sup>1</sup>

<sup>1</sup>*National Institute for Fusion Science, Toki 509-5292, Japan*

<sup>2</sup>*Research Institute for Applied Mechanics, Kyushu University, Kasuga 816-8580, Japan*

<sup>3</sup>*Department of Nuclear Engineering, Kyoto University, Kyoto 606-8501, Japan*

**Abstract:** Self-organized dynamics of toroidal helical plasma, which is induced by the nonlinear transport property, is discussed. Neoclassical ripple diffusion is a dominant mechanism that drives the radial electric field. The bifurcation nature of the electric field generation gives rise to the electric field domain interface, across which the electric field changes strongly. This domain interface is an origin of internal transport barrier in helical systems. This nonlinearity gives rise to the self-organized oscillations, the electric field pulsation is one of the examples. Based on the model of density limit, in which the competition between the transport loss and radiation loss is analyzed, dynamics near the density limit of helical systems is also discussed.

## 1. Introduction

In "steady-state" plasmas, plasma parameters evolve into self-regulated dynamical states, often being associated with self-organized oscillations [1]. In long plasma discharges, plasmas exhibit the features which are controlled by the nonlinear transport property, being free from the initial conditions. Such a property is the central issue of the physics of steady state plasmas. An example is the self-organized dynamics of the internal transport barrier of high- $\beta_p$  tokamaks, in which the toroidal current is almost completely sustained by the Bootstrap current [2]. The nonlinear transport drives, in one hand, the transition causing the spatial interface between two different radial domains. On the other hand, it induces the temporal evolution, i.e., the self-organized dynamics. The bifurcation of transport property, which generates the transport barrier like H-mode, gives rise to the self-organized dynamics like dithering ELMs [3]. In this article, physics of domain interface, barrier and self-organized dynamics is discussed for toroidal helical plasmas, from the generic view point of theory and modelling.

## 2. Model

A simple set of transport equations is taken in order to study the dynamics of helical plasmas. The electron density  $n$ , temperature  $T$ , and radial electric field  $E_r$  are chosen as parameters that characterize the plasma state. The dynamical model consists of the particle balance equation, the equation of momentum or radial electric field, and the equation for temperature, as

$$dn/dt = -\nabla\Gamma_r + S_p, \quad (1)$$

$$dE_r/dt = \nabla_\perp \mu_v \nabla_\perp E_r - \hat{J}_r, \quad (2)$$

$$d(nT)/dt = -\nabla q_r - P_{rad}/(3V) + P_{abs}/(3V). \quad (3)$$

Transport relations between plasma parameters and fluxes  $\Gamma_r$ ,  $q_r$ , and  $\mu_\perp \nabla_\perp E_r$  are nonlinear function of plasma gradient as shown in, e.g., [1]. The particle sources  $S_p$ , radial current  $\hat{J}_r$ , energy input source  $P_{abs}$ , and radiation loss  $P_{rad}$  play the role of source terms in this dynamical system. The magnetic field is assumed to be constant in time. This simplification excludes the self-organized dynamics like the one of ref.[2] in improved confinement state, but is relevant for low- $\beta$  helical plasmas. The system of these equations allows a variety of dynamical solutions being associated with transport barrier.

In helical systems, the neoclassical ripple transport could play a dominant role in the term  $\hat{J}_r[E_i]$ . Bifurcations of electric field and transport have been studied. The electric field interface, across which radial domains with different electric field polarity touch, has been predicted as a possibility for the internal transport barrier.

The particle flux associated with the helical-ripple trapped particles is employed after [4] in order to have an analytic insight as

$$\Gamma^{NC} = n D_j \left\{ 1 + C_j a^2 e^2 E_r^2 T_e^{-2} \right\}^{-1} \left( -n' n^{-1} + e E_r T^{-1} \right) \quad (4)$$

with  $D_j = 24 \varepsilon^2 \varepsilon_h^{1/2} v_j^{-1} v_D^2$  and  $C_j = 36 \varepsilon^{1/2} \varepsilon_h^{-1/2} T_e^2 (v_j r B e a)^{-2}$ . Notation is as follows:  $\varepsilon = r/R$  is the inverse aspect ratio,  $\varepsilon_h$  is the helical ripple,  $v_D = T/eRB$  is the toroidal drift velocity,  $v$  is the pitch-angle collision frequency,  $r$  is the minor radius,  $R$  is the major radius,  $a$  is the plasma minor radius, and the prime ' denotes the radial derivative  $d/dr$ , and suffix  $j$  denotes species (e, i). The coefficient  $C_e$  is small and is neglected. Hence the neoclassical electron energy flux is expressed in the regime of ripple diffusion as

$$q_e^{NC} = -a^{-1} n T_e D_e \gamma_e \left( a n' n^{-1} + a e E_r T_e^{-1} + \eta_{22} a T_e' T_e^{-1} \right) \quad (5)$$

where coefficients  $\gamma_e = 5$ ,  $\eta_{22} = 4.5$  and  $\eta_{12} = 3.5$  are numerical constants. The total flux is given as a sum of the neoclassical flux and anomalous flux. The particle and electron energy fluxes are put as

$$\Gamma_{tot} = \Gamma^{NC} - D_{anom} n' \quad (6)$$

$$q_{e, tot} = q_e^{NC} - \chi n T_e' \quad (7)$$

### 3. Domain Interface

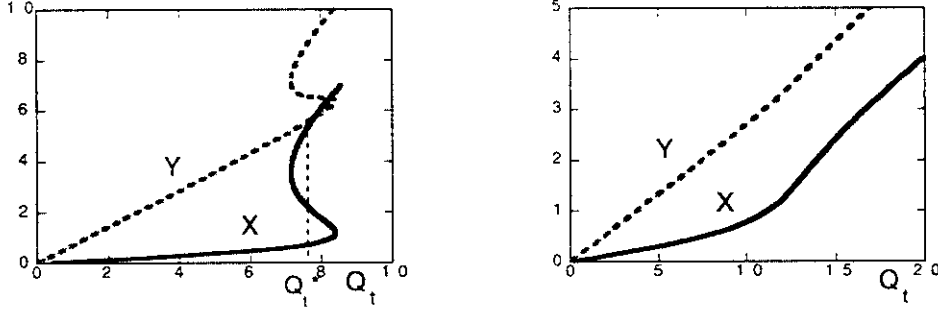
The bifurcation is studied by solving the stationary solution of Eqs.(1)-(3) for the circumstance of the ECH plasmas. Figure 1(a) illustrates the normalized radial electric field  $X = \sqrt{C_i} e a E / T_e$  and normalized temperature gradient  $Y = -\sqrt{C_i} \eta_{22} a T_e' / T_e$  as a function of the normalized radial energy flux  $Q_t = \sqrt{C_i} \left( \frac{n}{a} D_e \gamma_e T_e \right)^{-1} q_{e, tot}$ . ( In the case of ECH plasma, density gradient is much weaker than the temperature gradient, and we employ the simplification of  $Y \gg |an'/n|$ .) At critical energy flux, the electric field jumps to a higher branch on which the neoclassical energy diffusion is much smaller. The transition between two branches takes place at the critical heat flux  $Q_t^*$ , at which the Maxwell's construction rule is satisfied,

$$\int_{X_1}^{X_2} \left\{ \Gamma_i^{NC} - \Gamma_e^{NC} \right\} dX = 0 \quad (8)$$

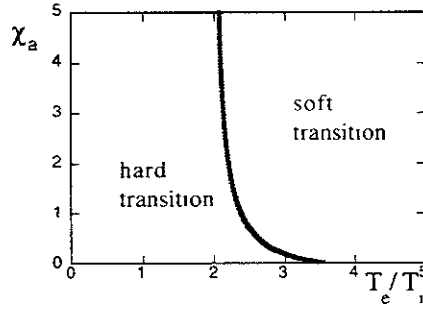
where  $X_1$  and  $X_2$  are two stable solutions of the equation  $\Gamma_i^{NC}(X) - \Gamma_e^{NC}(X) = 0$ .

Depending on the magnitude of anomalous transport and the electron-to-ion temperature ratio, the transition could be a soft transition. Figure 1(b) illustrates a soft bifurcation. Figure 2 illustrates the parameter region where the hard transition is possible to occur.

Analyses of Figs.1 and 2 are applied to understand the radial structure.



**Fig.1** Radial electric field  $X$  (solid line) and temperature gradient  $Y$  (dashed line) as a function of the heat flux. ( $T_i/T_e = 2$ ,  $D_i/D_e = 0.26$ ,  $b = 7/9$ ,  $\chi_a = \chi/\eta_{22} D_e \gamma_e = 0.5$ ; case (a)) and that for soft transition ( $T_i/T_e = 3$ ,  $D_i/D_e = 1.09$ ,  $b = 7/9$ ,  $\chi_a = 3$ ; case (b)).



**Fig.2** Region of hard transition is illustrated. ( $\chi_a = \chi/\eta_{22} D_e \gamma_e$  denotes the normalized anomalous thermal transport coefficient.) Mass ratio is chosen as  $m_i/m_e = 1836$ . Below this critical line, hard transition can take place.

For a fixed central heating power, the normalized heat flux  $Q_t$  is a function of radius. The higher  $Q_t$  denotes the inner region and the lower  $Q_t$  indicates the outer region. On the magnetic surface where

$$Q_t = Q_t^* \quad (9)$$

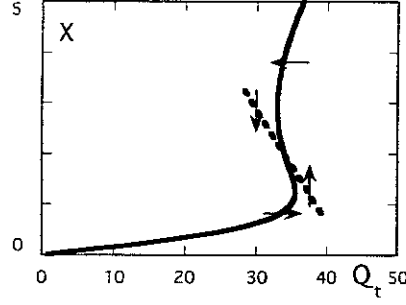
is satisfied, the domain interface for radial electric field exists. (Inside of this radius, the electric field is on the 'electron branch' and outside is on the 'ion branch'.) Across this domain interface, the radial electric field changes noticeably, so as to induce a large electric field inhomogeneity. The internal transport barrier (ITB) is established if the inhomogeneity is strong. This models the ITB formation in CHS [5]. Application to LHD plasma is discussed in [6].

#### 4. Dynamics of Barrier

The normalized electron energy flux has a dependence  $Q_t \propto q_{e, \text{tot}} T_e^{-4.5}$ . Therefore, the normalized heat flux is perturbed in the presence of temperature modulation  $\delta \hat{T}$  as

$$Q_t \approx (1 - 4.5 \delta \hat{T}) Q_{t0} \quad (10)$$

Change of temperature  $\delta \hat{T}$  and that of electric field  $\delta X$  are related as  $\delta \hat{T} \approx \delta X$  through



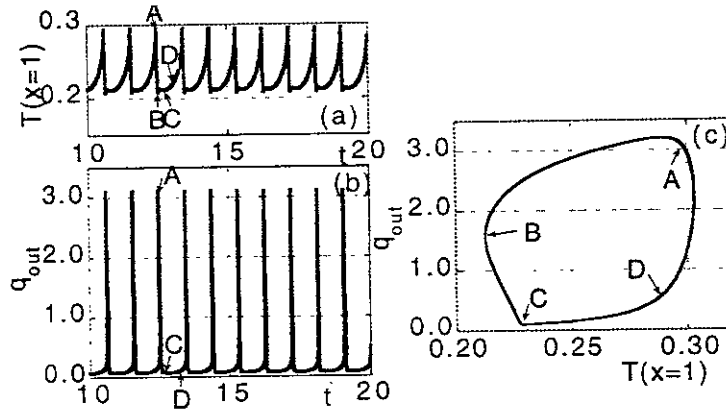
**Fig.3** Radial electric field  $X$  as a function of the heat flux (a). Self-generated oscillation is possible (b). Solid and dashed lines indicate  $\partial X/\partial t = 0$  and  $\partial Q_t/\partial t = 0$ , respectively.

the relation of  $Y = (1 + \chi_{anom})^{-1} (Q_t + X)$ . Substitution of the approximation  $\delta \hat{T} \simeq \delta X$  into Eq.(9) gives an estimate

$$Q_t \simeq (1 - 4.5 \delta X) Q_{t0} \quad (11)$$

where  $Q_{t0}$  is the unperturbed value. Figure 3 illustrates the flow diagram in the  $(X, Q_t)$  space. The solid line shows the condition  $dX/dt = 0$  and the dashed line indicates  $dQ_t/dt = 0$ . The cross-point is a fixed point. If the heating power is chosen as appropriate value, the fixed point could be an unstable fixed point. The limit cycle oscillation is possible to occur. This is a model of electric field pulsation which has been found in CHS [5].

The edge transport barrier is also studied. The self-organized oscillation takes place for the edge transport barrier for helical plasmas [7]. The 1-D transport equations (2) and (3) are solved for edge plasma (fixed density). A simple model of transport coefficient is employed as  $\chi = \chi_0 / (1 + X^2)$ , in order to model the influence of strong localized electric field. An edge transport barrier is established if the heat flux exceeds a critical value. In the vicinity of the critical heat flux, the repetitive establishment and decay of the barrier occur, as is illustrated in Fig.4. This is attributed to the dithering ELMs of helical systems.



**Fig.4** Temporal evolution of edge temperature (a) and heat flux across the edge  $q_{out}$  (b). Trajectory on the  $T - q_{out}$  is also illustrated (c).

## 5. Density Limit Oscillation

In impure plasmas, the radiation loss plays an important role in the long time evolution of confined plasmas. The dependence of the radiation loss on the temperature and density,  $P_{rad} = n_e n_i \langle L_Z(T) \rangle V$  with  $\langle L_Z(T) \rangle = \xi T^{-\gamma}$ , is known to cause the radiation instability, which would bound the operational density of toroidal plasmas. Combinations of transport equations also predict the self-organized dynamics near the density limit. By the growth of the symmetry-breaking perturbations, the rapid loss takes place. The critical condition for this instability is given in terms of the density and temperature as

$$T n^{-1} \leq \left( \xi q^2 R^2 n_i / 3 \chi_{\parallel 0} n_e \right)^{1/(\gamma+3.5)}, \quad (12)$$

where  $\gamma = 2/(\gamma + 3.5)$  and the parallel transport coefficient is assumed to have a form  $\chi_{\parallel} = \chi_{\parallel 0} n^{-1} T^{2.5}$ . When this instability occurs, the rapid plasma loss happens. By the onset of the reduction of density, the radiation collapse stops to continue, and the high temperature plasma can be recovered. This process repeats itself. This self-generated oscillation of density and radiation loss is a model of density limit oscillation in W7-AS stellarator [8].

Other possible self-organized dynamics in helical plasmas is the thermoelectric oscillation. Under the constant external heating, the absorbed power depends on the plasma parameter and electromagnetic field. This dependence causes another self-organized dynamics in helical plasmas.[9].

## 6. Summary

'Steady state' plasmas are often considered to be realized in confinement devices, in which the confining magnetic field is constant in time. In such plasmas, however, the nonlinear property of transport is the key for the spatio-temporal structure. The spatial domain interface is predicted to appear, being associated with the transport barrier. This mechanism, at the same time, induces the self-organized dynamics. This self-sustained dynamics is the key issue of the long-time asymptotic nature of the confined plasmas. Helical plasmas could be associated with the variety of dynamical phenomena in the absence of violent MHD activities.

## Acknowledgements

Authors wish to acknowledge useful discussions with Dr. A. Fujisawa and Dr. K. Ida. This work is partly supported by the Grant-in-Aid for Scientific Research and the Grant-in-Aid for International Scientific Research of Ministry of Education, Science, Sports and Culture of Japan. Authors wish to thank the collaboration programme of National Institute for Fusion Science. Two of the authors (KI and SII) acknowledge the discussion with Dr. L. Giannone on density limit phenomena of W7-AS.

## References

- [1] K. Itoh, S.-I. Itoh, A. Fukuyama: *Transport and Structural Formation in Plasmas* (IOP, Bristol, England, 1999).
- [2] A. Fukuyama et al.: *Nucl. Fusion* **35** (1995) 1669.
- [3] S.-I. Itoh, K. Itoh, A. Fukuyama: *Nucl. Fusion* **33** (1993) 1445.
- [4] L. M. Kovrizhnykh: *Comments Plasma Phys. Contr. Fusion* **13** (1989) 85.
- [5] A. Fujisawa, et al.: *Phys. Rev. Lett.* **81** (1998) 2256;  
A. Fujisawa, et al.: *Phys. Rev. Lett.* **82** (1999) 2669.
- [6] H. Sanuki, et al.: *J. Phys. Soc. Jpn.* **69** (2000) 445.
- [7] S. Toda, et al.: *10th International Toki Conference* (2000) paper PII-45.
- [8] L. Giannone, et al.: *Plasma Phys. Contr. Fusion* **42** (2000) 603.
- [9] K. Itoh, H. Sanuki and S.-I. Itoh: *Phys. Plasmas* **1** (1994) 796.

## Recent Issues of NIFS Series

- NIFS-584 T.H. Watanabe, T. Hayashi, T. Sato, M. Yamada and H. Ji,  
**Modeling of Magnetic Island Formation in Magnetic Reconnection Experiment**;Feb 1999
- NIFS-585 R. Kumazawa, T. Mutoh, T. Seki, F. Shinpo, G. Nomura, T. Ido, T. Watan, Jean-Marc Noterdaeme and Yangping Zhao,  
**Liquid Stub Tuner for Ion Cyclotron Heating**;Mar 1999
- NIFS-586 A. Sagara, M. Ima, S. Inagaki, N. Inoue, H. Suzuki, K. Tsuzuki, S. Masuzaki, J. Miyazawa, S. Monta, Y. Nakamura, N. Noda, B. Peterson, S. Sakakibara, T. Shimozuma, H. Yamada, K. Akaishi, H. Chikaraishi, H. Funaba, O. Kaneko, K. Kawahata, A. Komori, N. Ohyabu, O. Motojima, LHD Exp. Group 1, LHD Exp. Group 2,  
**Wall Conditioning at the Starting Phase of LHD**;Mar. 1999
- NIFS-587 T. Nakamura and T. Yabe,  
**Cubic Interpolated Propagation Scheme for Solving the Hyper-Dimensional Vlasov-Poisson Equation in Phase Space**;Mar. 1999
- NIFS-588 W.X. Wnag, N. Nakajima, S. Murakami and M. Okamoto,  
**An Accurate  $\delta f$  Method for Neoclassical Transport Calculation**;Mar 1999
- NIFS-589 K. Kishida, K. Araki, S. Kishiba and K. Suzuki,  
**Local or Nonlocal? Orthonormal Divergence-free Wavelet Analysis of Nonlinear Interactions in Turbulence**;Mar. 1999
- NIFS-590 K. Araki, K. Suzuki, K. Kishida and S. Kishiba,  
**Multiresolution Approximation of the Vector Fields on  $T^3$** ;Mar. 1999
- NIFS-591 K. Yamazaki, H. Yamada, K.Y.Watanabe, K. Nishimura, S. Yamaguchi, H. Nakanishi, A. Komori, H. Suzuki, T. Mito, H. Chikaraishi, K. Mural, O. Motojima and the LHD Group,  
**Overview of the Large Helical Device (LHD) Control System and Its First Operation**;Apr. 1999
- NIFS-592 T. Takahashi and Y. Nakao,  
**Thermonuclear Reactivity of D-T Fusion Plasma with Spin-Polarized Fuel**; Apr. 1999
- NIFS-593 H. Sugama,  
**Damping of Toroidal Ion Temperature Gradient Modes**; Apr 1999
- NIFS-594 Xiaodong Li ,  
**Analysis of Crowbar Action of High Voltage DC Power Supply in the LHD ICRF System**; Apr. 1999
- NIFS-595 K. Nishimura, R. Horuchi and T. Sato,  
**Drift-kink Instability Induced by Beam Ions in Field-reversed Configurations**;Apr. 1999
- NIFS-596 Y. Suzuki, T-H. Watanabe, T. Sato and T. Hayashi,  
**Three-dimensional Simulation Study of Compact Toroid Plasmoid Injection into Magnetized Plasmas**; Apr. 1999
- NIFS-597 H. Sanuki, K. Itoh, M. Yokoyama, A. Fujisawa, K. Ida, S. Toda, S.-I. Itoh, M. Yagi and A. Fukuyama,  
**Possibility of Internal Transport Barrier Formation and Electric Field Bifurcation in LHD Plasma**;  
May 1999
- NIFS-598 S. Nakazawa, N. Nakajima, M. Okamoto and N. Ohyabu,  
**One Dimensional Simulation on Stability of Detached Plasma in a Tokamak Divertor**;June 1999
- NIFS-599 S. Murakami, N. Nakajima, M. Okamoto and J. Nhrenberg,  
**Effect of Energetic Ion Loss on ICRF Heating Efficiency and Energy Confinement Time in**



**Heliotrons;**  
June 1999

- NIFS-600 R. Honuchi and T. Sato,  
**Three-Dimensional Particle Simulation of Plasma Instabilities and Collisionless Reconnection in a Current Sheet;** June 1999
- NIFS-601 W. Wang, M. Okamoto, N. Nakajima and S. Murakami,  
**Collisional Transport in a Plasma with Steep Gradients;** June 1999
- NIFS-602 T. Mutoh, R. Kumazawa, T. Saki, K. Sato, F. Simpo, G. Nomura, T. Watan, X. Jikang, G. Cattanei, H. Okada, K. Ohkubo, M. Sato, S. Kubo, T. Shimozuma, H. Idei, Y. Yoshimura, O. Kaneko, Y. Takeiri, M. Osakabe, Y. Oka, K. Tsumori, A. Komon, H. Yamada, K. Watanabe, S. Sakakibara, M. Shoji, R. Sakamoto, S. Inagaki, J. Miyazawa, S. Morita, K. Tanaka, B.J. Peterson, S. Murakami, T. Minami, S. Ohdachi, S. Kado, K. Narihara, H. Sasao, H. Suzuki, K. Kawahata, N. Ohyabu, Y. Nakamura, H. Funaba, S. Masuzaki, S. Muto, K. Sato, T. Morsaki, S. Sudo, Y. Nagayama, T. Watanabe, M. Sasao, K. Ida, N. Noda, K. Yamazaki, K. Akaishi, A. Sagara, K. Nishimura, T. Ozaki, K. Toi, O. Motojima, M. Fujiwara, A. Iiyoshi and LHD Exp. Group 1 and 2,  
**First ICRF Heating Experiment in the Large Helical Device;** July 1999
- NIFS-603 P.C. de Vries, Y. Nagayama, K. Kawahata, S. Inagaki, H. Sasao and K. Nagasaki,  
**Polarization of Electron Cyclotron Emission Spectra in LHD;** July 1999
- NIFS-604 W. Wang, N. Nakajima, M. Okamoto and S. Murakami,  
 **$\delta f$  Simulation of Ion Neoclassical Transport;** July 1999
- NIFS-605 T. Hayashi, N. Mizuguchi, T. Sato and the Complexity Simulation Group,  
**Numerical Simulation of Internal Reconnection Event in Spherical Tokamak;** July 1999
- NIFS-606 M. Okamoto, N. Nakajima and W. Wang,  
**On the Two Weighting Scheme for  $\delta f$  Collisional Transport Simulation;** Aug. 1999
- NIFS-607 O. Motojima, A.A. Shishkin, S. Inagaki, K.Y. Watanabe,  
**Possible Control Scenario of Radial Electric Field by Loss-Cone-Particle Injection into Helical Device;** Aug. 1999
- NIFS-608 R. Tanaka, T. Nakamura and T. Yabe,  
**Constructing Exactly Conservative Scheme in Non-conservative Form;** Aug. 1999
- NIFS-609 H. Sugama,  
**Gyrokinetic Field Theory;** Aug 1999
- NIFS-610 M. Takechi, G. Matsunaga, S. Takagi, K. Ohkuni, K. Toi, M. Osakabe, M. Isobe, S. Okamura, K. Matsuoka, A. Fujisawa, H. Iguchi, S. Lee, T. Minami, K. Tanaka, Y. Yoshimura and CHS Group,  
**Core Localized Toroidal Alfvén Eigenmodes Destabilized By Energetic Ions in the CHS Heliotron/Torsatron;** Sep. 1999
- NIFS-611 K. Ichiguchi,  
**MHD Equilibrium and Stability in Heliotron Plasmas;** Sep 1999
- NIFS-612 Y. Sato, M. Yokoyama, M. Wakatani and V. D. Pustovitov,  
**Complete Suppression of Pfirsch-Schluter Current in a Toroidal  $I=3$  Stellarator;** Oct. 1999
- NIFS-613 S. Wang, H. Sanuki and H. Sugama,  
**Reduced Drift Kinetic Equation for Neoclassical Transport of Helical Plasmas in Ultra-low Collisionality Regime;** Oct. 1999
- NIFS-614 J. Miyazawa, H. Yamada, K. Yasui, S. Kato, N., Fukumoto, M. Nagata and T. Uyama,  
**Design of Spheromak Injector Using Conical Accelerator for Large Helical Device;** Nov. 1999
- NIFS-615 M. Uchida, A. Fukuyama, K. Itoh, S.-I. Itoh and M. Yagi,  
**Analysis of Current Diffusive Ballooning Mode in Tokamaks;** Dec. 1999

- NIFS-616 M. Tanaka, A.Yu Grosberg and T. Tanaka,  
Condensation and Swelling Behavior of Randomly Charged Multichain Polymers by  
Molecular Dynamics Simulations; Dec 1999
- NIFS-617 S. Goto and S. Kida,  
Sparseness of Nonlinear Coupling, Dec 1999
- NIFS-618 M.M. Skoric, T. Sato, A. Maluckov and M.S. Jovanovic,  
Complexity in Laser Plasma Instabilities Dec 1999
- NIFS-619 T.-H. Watanabe, H. Sugama and T. Sato,  
Non-dissipative Kinetic Simulation and Analytical Solution of Three-mode Equations of  
Ion Temperature Gradient Instability, Dec. 1999
- NIFS-620 Y. Oka, Y. Takeiri, Yu. I. Belchenko, M. Hamabe, O. Kaneko, K. Tsumori, M. Osakabe, E. Asano, T. Kawamoto, R.  
Akiyama,  
Optimization of Cs Deposition in the 1/3 Scale Hydrogen Negative Ion Source for LHD-  
NBI System ;Dec. 1999
- NIFS-621 Yu.I. Belchenko, Y. Oka, O. Kaneko, Y. Takeiri, A. Krivenko, M. Osakabe, K. Tsumori, E. Asano, T. Kawamoto, R. Akiyama,  
Recovery of Cesium in the Hydrogen Negative Ion Sources;Dec 1999
- NIFS-622 Y. Oka, O. Kaneko, K. Tsumori, Y. Takeiri, M. Osakabe, T. Kawamoto, E. Asano, and R. Akiyama,  
H- Ion Source Using a Localized Virtual Magnetic Filter in the Plasma Electrode: Type I  
LV Magnetic Filter; Dec. 1999
- NIFS-623 M. Tanaka, S. Kida, S. Yanase and G. Kawahara,  
Zero-absolute-vorticity State in a Rotating Turbulent Shear Flow, Jan. 2000
- NIFS-624 F. Leuterer, S. Kubo,  
Electron Cyclotron Current Drive at  $\omega \approx \omega_c$  with X-mode Launched from the Low Field  
Side; Feb. 2000
- NIFS-625 K. Nishimura,  
Wakefield of a Charged Particulate Influenced by Emission Process of Secondary  
Electrons; Mar. 2000
- NIFS-626 K. Itoh, M. Yagi, S.-I. Itoh, A. Fukuyama,  
On Turbulent Transport in Burning Plasmas, Mar 2000
- NIFS-627 K. Itoh, S.-I. Itoh, L. Giannone,  
Modelling of Density Limit Phenomena in Toroidal Helical Plasmas, Mar 2000
- NIFS-628 K. Akaishi, M. Nakasuga and Y. Funato,  
True and Measured Outgassing Rates of a Vacuum Chamber with a Reversibly Absorbed  
Phase; Mar 2000
- NIFS-629 T. Yamagishi,  
Effect of Weak Dissipation on a Drift Orbit Mapping; Mar. 2000
- NIFS-630 S. Toda, S.-I. Itoh, M. Yagi, A. Fukuyama and K. Itoh,  
Spatial Structure of Compound Dither in L/H Transition, Mar 2000
- NIFS-631 N. Ishihara and S. Kida,  
Axial and Equatorial Magnetic Dipoles Generated in a Rotating Spherical Shell; Mar 2000
- NIFS-632 T. Kuroda, H. Sugama, R. Kanno and M. Okamoto,  
Ion Temperature Gradient Modes in Toroidal Helical Systems, Apr 2000

- NIFS-633 V.D. Pustovitov ,  
Magnetic Diagnostics: General Principles and the Problem of Reconstruction of Plasma Current and Pressure Profiles in Toroidal Systems; Apr. 2000
- NIFS-634 A.B. Mikhailovskii, S.V. Konovalov, V.D. Pustovitov and V.S. Tsypin,  
Mechanism of Viscosity Effect on Magnetic Island Rotation; Apr. 2000
- NIFS-635 H. Naitou, T. Kuramoto, T. Kobayashi, M. Yagi, S. Tokuda and T. Matsumoto,  
Stabilization of Kinetic Internal Kink Mode by Ion Diamagnetic Effects; Apr. 2000
- NIFS-636 A. Kageyama and S. Kida,  
A Spectral Method in Spherical Coordinates with Coordinate Singularity at the Origin; Apr. 2000
- NIFS-637 R. Horiuchi, W. Pei and T. Sato,  
Collisionless Driven Reconnection in an Open System; June 2000
- NIFS-638 K. Nagaoka, A. Okamoto, S. Yoshimura and M.Y. Tanaka,  
Plasma Flow Measurement Using Directional Langmuir Probe under Weakly Ion-Magnetized Conditions; July 2000
- NIFS-639 Alexei Ivanov,  
Scaling of the Distribution Function and the Critical Exponents near the Point of a Marginal Stability under the Vlasov-Poisson Equations; Aug. 2000
- NIFS-640 K. Ohi, H. Naitou, Y. Tauchi, O. Fukumasa,  
Observation of the Limit Cycle in the Asymmetric Plasma Divided by the Magnetic Filter; Aug. 2000
- NIFS-641 H. Momota, G.H. Miley and J. Nadler,  
Direct Energy Conversion for IEC Propulsions; Aug. 2000
- NIFS-642 Y. Kondoh, T. Takahashi and H. Momota,  
Revisit to the Helicity and the Generalized Self-organization Theory; Sep. 2000
- NIFS-643 H. Soltwisch, K. Tanaka,  
Changes of the Electron Density Distribution during MHD Activity in CHS Sep. 2000
- NIFS-644 Fujisawa, A., Iguchi, H., Minami, T., Yoshimura, Y., Sanuki, H., Itoh, K., Isobe, M., Nishimura, S., Tanaka, K., Osakabe, M., Nomura, I., Ida, K., Okamura, S., Toi, K., Kado, S., Akiyama, R., Shimizu, A., Takahashi, C., Kojima, M., Matsuoka, K., Hamada, Y., Fujiwara, M.,  
Observation of Bifurcation Property of Radial Electric Field Using a Heavy Ion Beam Probe Sep. 2000  
(IAEA-CN-77/EX6/6)
- NIFS-645 Todo, Y., Watanabe, T.-H., Park, H.-B., Sato, T.,  
Fokker-Planck Simulation Study of Alfvén Eigenmode Burst Sep. 2000  
(IAEA-CN-77/TH6/2)
- NIFS-646 Muroga, T., Nagasaka, T.,  
Development of Manufacturing Technology for High Purity Low Activation Vanadium Alloys Sep. 2000  
(IAEA-CN-77/FTP1/09)
- NIFS-647 Itoh, K., Sanuki, H., Toda, S., Itoh, S.-I., Yagi, M., Fukuyama, A., Yokoyama, M.,  
Theory of Dynamics in Long Pulse Helical Plasmas Sep. 2000  
(IAEA-CN-77/THP1/19)