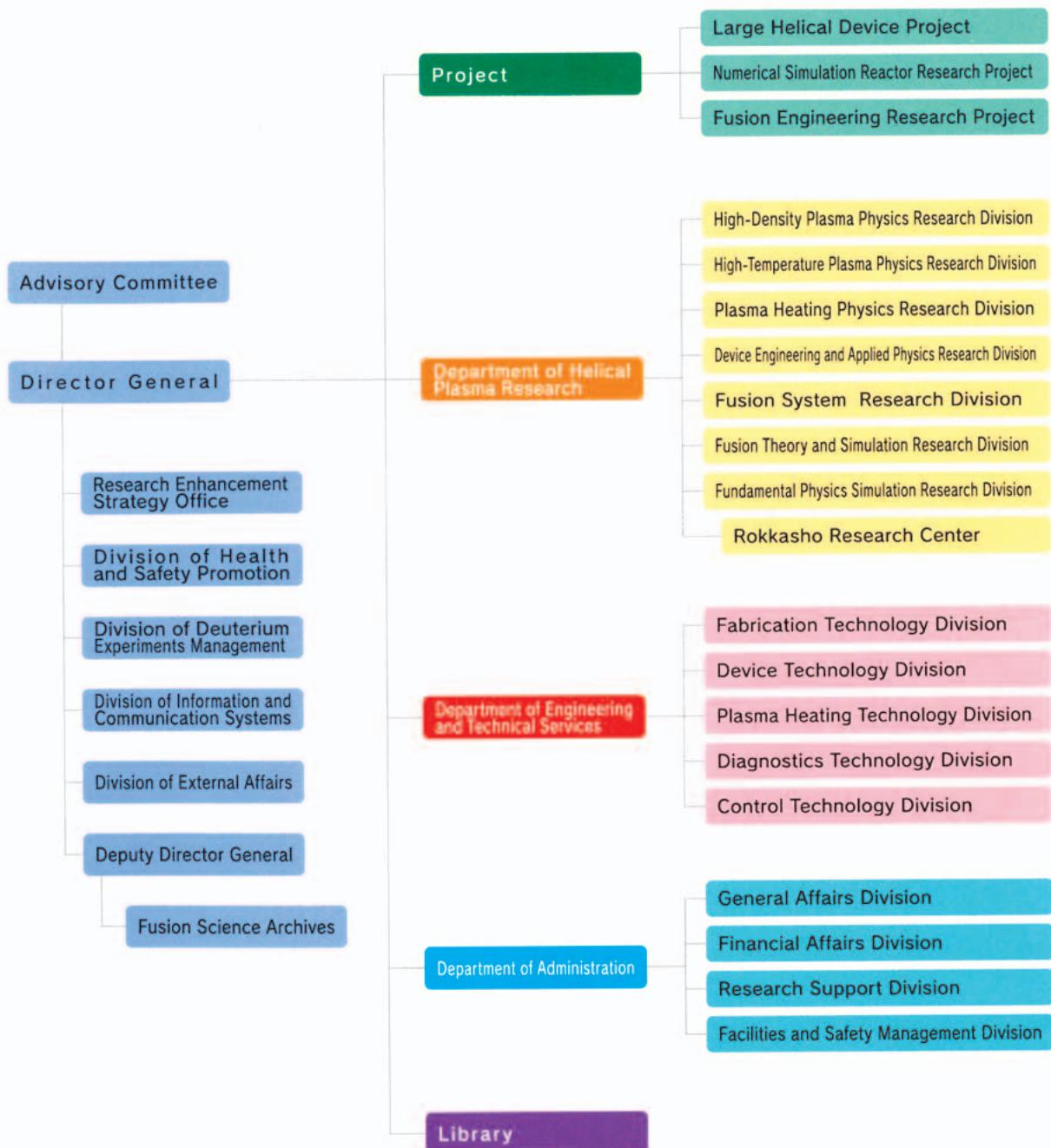


# APPENDIX

## APPENDIX 1. Organization of the Institute

NATIONAL INSTITUTE for FUSION SCIENCE

### Organization



## APPENDIX 2. Members of Committees

### Advisory Committee

ANDO, Akira	Professor, Graduate School of Engineering, Tohoku University
USHIGUSA, Kenkichi	Managing Director, Fusion Energy Research and Development Directorate, National Institutes for Quantum and Radiological Science and Technology
OHNO, Noriyasu	Director, Graduate School of Engineering, Nagoya University
OGAWA, Yuichi	Professor, Graduate School of Frontier Science, The University of Tokyo
KODAMA, Ryouzuke	Director, Institute of Laser Engineering, Osaka University
NAGASAKI, Kazunobu	Professor, Institute of Advanced Energy, Kyoto University
NAKASHIMA, Yousuke	Director, Plasma Research Center, University of Tsukuba
HANADA, Kazuaki	Director, Research Institute for Applied Mechanics, Kyushu University
WATANABE, Tomohiko	Professor, Department of Physics, Nagoya University
WADA, Motoi	Professor, Faculty of Science and Engineering, Doshisha University
MUROGA, Takeo	Deputy Director General, NIFS and Executive Director of Fusion Engineering Research Project, NIFS
MORISAKI, Tomohiro	Executive Director of Large Helical Device Project (on Science), NIFS
OSAKABE, Masaki	Executive Director of Large Helical Device Project (on Device), NIFS
SUGAMA, Hideo	Executive Director of Numerical Simulation Research Project, NIFS
YANAGI, Nagato	Executive Director of Fusion Engineering Research Project, NIFS
KUBO, Shin	Director of Plasma Heating Research Division, NIFS
MITO, Toshiyuki	Director of Device Engineering and Applied Physics Research Division, NIFS
MURAKAMI, Izumi	Director of Fusion Systems Research Division, NIFS
TODO, Yasushi	Director of Fusion Theory and Simulation Research Division, NIFS
ISHIGURO, Seiji	Director of Fundamental Physics Simulation Research Division, NIFS
NISHIMURA, Kiyohiko	Division Director for Health and Safety Promotion, NIFS

※ This list was compiled as of March 31, 2021

## APPENDIX 3. Advisors, Fellows, and Professors Emeritus

### Advisors

Michael Tendler                      Professor  
Royal Institute of Technology  
Alfvén Laboratory

### Fellows

YAMADA, Hiroshi

### Professors Emeritus

ICHIKAWA, Yoshihiko (1993)	MATSUOKA, Keisuke (2010)
MIZUNO, Yukio (1994)	TOI, Kazuo (2012)
FUJITA, Junji (1996)	NARIHARA, Kazumichi (2012)
KURODA, Tsutomu (1997)	KUMAZAWA, Ryuhei (2012)
AMANO, Tsuneo (1998)	UDA, Tatsuhiko (2012)
MOMOTA, Hiromu (1998)	SATO, Motoyasu (2012)
IYOSHI, Atsuo (1999)	YAMAZAKI, Kozo (2013)
HATORI, Tadatsugu (1999)	KAWAHATA, Kazuo (2013)
TANAHASHI, Shugo (2000)	OKAMURA, Shoichi (2014)
KAWAMURA, Takaichi (2000)	KOMORI, Akio (2015)
SATO, Tetsuya (2001)	SUDO, Shigeru (2015)
FUJIWARA, Masami (2002)	SKORIC, Milos (2015)
TODOROKI, Jiro (2003)	MUTO, Takashi (2016)
KAMIMURA, Tetsuo (2003)	NAGAYAMA, Yoshio (2017)
OHKUBO, Kunizo (2005)	NAKAMURA, Yukio (2017)
HAMADA, Yasuji (2007)	SAGARA, Akio (2017)
KATO, Takako (2007)	ITOH, Kimitaka (2017)
NODA, Nobuaki (2008)	HORIUCHI, Ritoku (2017)
WATARI, Tetsuo (2008)	HIROOKA, Yoshihiko (2018)
MOTOJIMA, Osamu (2009)	MORITA, Shigeru (2019)
SATO, Kohnosuke (2010)	NISHIMURA, Arata (2019)
OHYABU, Nobuyoshi (2010)	

※ This list was compiled as of March 31, 2021

## APPENDIX 4. List of Staff

### Director General

TAKEIRI, Yasuhiko

### Deputy Director General

MUROGA, Takeo

### Department of Helical Plasma Research

Prof. MUROGA, Takeo (Director)

### High-Density Plasma Physics Research Division

Prof. MORISAKI, Tomohiro (Director)  
Prof. WATANABE, Kiyomasa  
Prof. SAKAMOTO, Ryuichi  
Assoc. Prof. YOSHIMURA, Shinji  
Assoc. Prof. OHDACHI, Satoshi  
Assoc. Prof. SHOJI, Mamoru  
Assoc. Prof. TOKUZAWA, Tokihiko  
Assoc. Prof. KOBAYASHI, Masahiro  
Assoc. Prof. MOTOJIMA, Gen

Asst. Prof. NARUSHIMA, Yoshiro  
Asst. Prof. TAKEMURA, Yuki  
Asst. Prof. TSUCHIYA, Hayato  
Asst. Prof. OISHI, Tetsutaro  
Asst. Prof. NISHIMURA, Shin  
Asst. Prof. HAYASHI, Yuki  
Asst. KAWAMOTO, Yasuko  
Specially Asst. Prof. OHTSUBO, Yohko

### High-Temperature Plasma Physics Research Division

Prof. SAKAKIBARA, Satoru (Director)  
Prof. TANAKA, Kenji  
Prof. ISOBE, Mitsutaka  
Prof. IDA, Katsumi  
Prof. PETERSON, Byron Jay  
Assoc. Prof. GOTO, Motoshi  
Assoc. Prof. TAMURA, Naoki  
Assoc. Prof. YAMADA, Ichihiko  
Assoc. Prof. YASUHARA, Ryo  
Assoc. Prof. OZAKI, Tetsuo  
Assoc. Prof. NAKANISHI, Hideya

Asst. Prof. OGAWA, Kunihiro  
Asst. Prof. KOBAYASHI, Tatsuya  
Asst. Prof. MUTO, Sadatsugu  
Asst. Prof. FUNABA, Hisamichi  
Asst. Prof. YOSHINUMA, Mikirou  
Asst. Prof. SUZUKI, Chihiro  
Asst. Prof. SHIMIZU, Akihiro  
Asst. Prof. EMOTO, Masahiko  
Asst. Prof. MUKAI, Kiyofumi  
Asst. Prof. UEHARA, Hiyori  
Specially Appointed Prof. NISHITANI, Takeo

### Plasma Heating Physics Research Division

Prof. KUBO, Shin (Director)  
Prof. SIMOZUMA, Takashi  
Prof. OSAKABE, Masaki  
Prof. TSUMORI, Katsuyoshi  
Assoc. Prof. YOSHIMURA, Yasuo  
Assoc. Prof. NISHIURA, Masaki  
Assoc. Prof. IGAMI, Hiroe  
Assoc. Prof. TAKAHASHI, Hiromi  
Assoc. Prof. SAITO, Kenji  
Assoc. Prof. SEKI, Tetsuo

Prof. NAGAOKA, Kenichi  
Asst. Prof. TSUJIMURA, Toru  
Asst. Prof. NAKANO, Haruhisa  
Asst. Prof. KAMIO, Shuji  
Asst. Prof. IKEDA, Katsunori  
Asst. Prof. KISAKI, Masashi  
Asst. Prof. SEKI, Ryosuke  
Asst. Prof. FUJIWARA, Yutaka  
Asst. Prof. NUGA, Hideo  
Asst. Prof. YANAI, Ryohma

### **Device Engineering and Applied Physics Research Division**

Prof. MITO, Toshiyuki (Director)  
Prof. TAKAHATA, Kazuya  
Prof. IMAGAWA, Shinsaku  
Prof. YANAGI, Nagato  
Prof. NISHIMURA, Kiyohiko  
Prof. HIRANO, Naoki  
Assoc. Prof. IWAMOTO, Akifumi  
Assoc. Prof. HAMAGUCHI, Shinji

Assoc. Prof. CHIKARAIISHI, Hirotaka  
Assoc. Prof. TAKAYAMA, Sadatsugu  
Assoc. Prof. TANAKA, Masahiro  
Assoc. Prof. SAZE, Takuya  
Asst. Prof. TAKADA, Suguru  
Asst. Prof. OBANA, Tetsuhiro  
Asst. Prof. KOBAYASHI, Makoto  
Asst. Prof. ONODERA, Yuta

### **Fusion Systems Research Division**

Prof. MURAKAMI, Izumi (Director)  
Prof. MUROGA, Takeo  
Prof. MIYAZAWA, Junichi  
Prof. NISHIMURA, Arata  
Prof. MASUZAKI, Suguru  
Assoc. Prof. TANAKA, Teruya  
Assoc. Prof. TAMURA, Hitoshi  
Assoc. Prof. NAGASAKA, Takuya  
Assoc. Prof. HISHINUMA, Yoshimitsu

Assoc. Prof. KATO, Daiji  
Assoc. Prof. TOKITANI, Masayuki  
Asst. Prof. GOTO, Takuya  
Asst. Prof. ASHIKAWA, Naoko  
Asst. Prof. NOTO, Hiroyuki  
Asst. Prof. SAKAUE, Hiroyuki  
Asst. Prof. HAMAJI, Yukinori  
Asst. Prof. YAJIMA, Miyuki

### **Fusion Theory and Simulation Research Division**

Prof. TODO, Yasushi (Director)  
Prof. SUGAMA, Hideo  
Prof. ICHIGUCHI, Katsuji  
Prof. YOKOYAMA, Masayuki  
Assoc. Prof. MIZUGUCHI, Naoki  
Assoc. Prof. TODA, Shinichiro  
Assoc. Prof. SATAKE, Shinsuke  
Assoc. Prof. KANNO, Ryutaro  
Assoc. Prof. SUZUKI, Yasuhiro

Assoc. Prof. NUNAMI, Masanori  
Asst. Prof. YAMAGISHI, Osamu  
Asst. Prof. ISHIZAKI, Ryuichi  
Asst. Prof. NAKATA, Motoki  
Asst. Prof. WANG, Hao  
Asst. Prof. KAWAMURA, Gakushi  
Asst. Prof. SATO, Masahiko  
Asst. Prof. YAMAGUCHI, Hiroyuki  
Asst. Prof. MATSUOKA, Seikichi

### **Fundamental Physics Simulation Research Division**

Prof. ISHIGURO, Seiji (Director)  
Prof. MIURA, Hideaki  
Prof. NAKAMURA, Hiroaki  
Prof. SAKAGAMI, Hitoshi  
Assoc. Prof. USAMI, Shunsuke  
Assoc. Prof. OHTANI, Hiroaki  
Assoc. Prof. ITO, Atsushi M.

Assoc. Prof. TOIDA, Mieko  
Assoc. Prof. YAMAMOTO, Takashi  
Asst. Prof. HASEGAWA, Hiroki  
Asst. Prof. MORITAKA, Toseo  
Asst. Prof. ITO, Atsushi  
Asst. Prof. TAKAYAMA, Arimichi

### **Rokkasho Research Center**

Prof. NAKAJIMA, Noriyoshi  
Asst. Prof. SATO, Masahiko (Additional Post)

### **Project**

#### **Large Helical Device Project**

Prof. MORISAKI, Tomohiro  
Prof. OSAKABE, Masaki

#### **Numerical Simulation Reactor Research Project**

Prof. SUGAMA, Hideo

#### **Fusion Engineering Research Project**

Prof. MUROGA, Takeo  
Prof. YANAGI, Nagato

**Research Enhancement Strategy Office**

Prof. MUROGA, Takeo (Director)  
Specially Appointed Prof. OKAMURA, Shoichi  
Specially Appointed Prof. ROBINSON, Kenneth  
Specially Appointed Prof. YAJI Kentaro  
Assoc. Prof. KASAHARA.Hiroshi

**Division of Health and Safety Promotion**

Prof. NISHIMURA, Kiyohiko (Division Director)

**Division for Deuterium Experiments Management**

Prof. OSAKABE, Masaki (Division Director)

**Division of Information and Communication Systems**

Prof. ISHIGURO, Seiji (Division Director)

**Division of External Affairs**

Prof. TAKAHATA, Kazuya (Division Director)

**Fusion Science Archives**

Prof. KUBO, Shin (Director)

**Library**

Prof. MURAKAMI, Izumi (Director)

---

※ This list was compiled as of March 31, 2021

**Guest Professor**

Prof. WANG, Weixing                      Princeton Plasma Physics Lab                      Mar. 22, 2019 – Apr. 21, 2019

**COE Research Fellows**

SIMON Partric  
SHIN Shogeth  
JACOBO Varela Rodriguz  
MALIK Idouakass  
CHEN Hengjiun  
ISLAM Md. Shahinul

**Research Fellow (Science research)**

(None)

**Research Fellow (Industrial-Academic coordination)**

(None)

**JSPS Research Fellow**

(None)

**Department of Administration**

NISHIYAMA, Kazunori      Department Director

**General Affairs Division**

NISHIO, Naoaki      Director  
ICHIOKA, Akihiro      Senior Advisor  
ARAI, Masanori      Chief/General Affairs Section  
SHIMIZU, Kazuma      Chief/Planning and Evaluation Section  
MAEDA, Yoshikazu      Chief/Employee Section  
SUGIMOTO, Michiho      Chief/Personnel and Payroll Section  
MATSUBARA, Tomohisa      Chief/Communications and Public Affairs Section

**Financial Affairs Division**

SHIMIZU, Naomi      Director  
TSUDA, Makoto      Deputy Director  
KAWAI, Sanae      Chief/Financial Planning Section  
Iwashima, Itsuki      Chief/Accounts and Properties Administration Section  
FUJII, Kazuki      Chief/Audit Section  
FUKUOKA, Miwa      Chief/Contracts Section  
HIBINO, Atsushi      Chief/Procurement Section  
HIBINO, Atsushi      Leader/Purchase Validation Section

**Research Support Division**

FUJITA, Hirotsada      Director  
TERUMOTO, Naoki      Deputy Director  
SUZUKI, Takayuki      Chief/Research Support Section  
SOGA, Shihoko      Chief/International Collaboration Section  
URUSHIHARA, Satona      Chief/Graduate Student Affairs Section  
OHTA, Masako      Chief/Academic Information Section  
TERUMOTO, Naoki      Leader/Visitor Center (Additional Post)  
KONDO, Takahiko      Chief/Visitor Center

**Facilities and Safety Management Division**

SHIRAHIGE, Tamio      Director  
NITTA, Haruki      Senior Specialist.  
NITTA, Haruki      Chief/Facilities Section (Additional Post)  
MIYATA, Kazuaki      Chief/Equipment Section

---

※ This list was compiled as of March 31, 2021

## APPENDIX 5. List of Publications I (NIFS Reports)

- NIFS-PROC-114 The 7th Japan-China-Korea Joint Seminar on Atomic and Molecular Processes in Plasma  
(AMPP2018)  
May 10, 2019
- NIFS-PROC-115 IFS-SWJTU JOINT PROJECT FOR CFQS -.PHYSICS AND ENGINEERING DESIGN-  
VER. 2.1 2019. SEP  
Nov. 08, 2019
- NIFS-PROC-116 Collected papers at the 2019 Post-CUP Workshop & JSPS-CAS Bilateral Joint Research Projects Workshop,  
24th–26th July, 2019, Nagoya, Japan  
Feb. 21, 2021
- NIFS-MEMO-86 Report on Administrative Work for Radiation Safety  
From April 2018 to March 2019 (in Japanese)  
Jan. 14, 2020
- NIFS-MEMO-87 Proposal of the CHS-qa experiment  
CHS-qa design team  
July 22, 2020

※ This list was compiled as of March 31, 2021



## APPENDIX 6. List of Publications II (Journals, etc.)

- 1 Akaslompolo S., Drewelow P., Gao Y., Ali A., Biedermann C., Bozhenkov S., Dhard C., Endler M., Fellingner J., Ford O., Geiger B., Geiger J., Harder N., Hartmann D., Hathiramani D., Isobe M., Jakubowski M., Kazakov Y., Killer C., Lazerson S., Mayer M., McNeely P., Naujoks D., Neelis T., Kontula J., Kurki-suonio T., Niemann H., Ogawa K., Pisano F., Poloskei P., Sitjes A., Rahbarnia K., Rust N., Schmitt J., Sleccka M., Vano L., Vuuren A., Wurden G., Wolf R., W7-x team T.  
Validating the ASCOT modelling of NBI fast ions in Wendelstein 7-X stellarator  
Journal of Instrumentation 14 C10012
- 2 Akata N., Hasegawa H., Sugihara S., Tanaka M., Furukawa M., Kurita N., Kovács T., Shiroma Y., Kakiuchi H.  
Tritium, hydrogen and oxygen isotope compositions in monthly precipitation samples collected at Toki, JAPAN  
Radiation Protection Dosimetry 184 3-4 338-341
- 3 Akata N., Tanaka M., Iwata C., Kato A., Nakada M., Kovács T., Kakiuchi H.  
Isotope Composition and Chemical Species of Monthly Precipitation Collected at the Site of a Fusion Test Facility in Japan  
International Journal of Environmental Research and Public Health 16 20 3883
- 4 Arakawa H., Sasaki M., Inagaki S., Kosuga Y., Kobayashi T., Kasuya N., Yamada T., Nagashima Y., Kin F., Fujisawa A., Itoh K., Itoh S.  
Roles of solitary eddy and splash in drift wave–zonal flow system in a linear magnetized plasma  
Physics of Plasmas 26 5 26-5, 052305
- 5 Chen H., Ikesue A., Noto H., Uehara H., Hishinuma Y., Muroga T., Yasuhara R.  
Nd<sup>3+</sup>-activated CaF<sub>2</sub> ceramic lasers  
Optics Letters 44 13 3378-3381
- 6 Chen H., Uehara H., Kawase H., Yasuhara R.  
Efficient Pr:YAlO<sub>3</sub> lasers at 622 nm, 662 nm, and 747 nm pumped by semiconductor laser at 488 nm  
Optics Express 28 3 3017-3024
- 7 Chen J., Ida K., Yoshinuma M., Murakami I., Kobayashi T., Ye Y., Lyu B.  
Effect of Energy Dependent Cross-section on Flow Velocity Measurements with Charge Exchange Spectroscopy in Magnetized Plasma  
Physics Letters A 383 12 1293-1299
- 8 Chikada T., Kimura K., Mochizuki J., Horikoshi S., Matsunaga M., Fujita H., Okitsu K., Tanaka T., Hishinuma Y., Sakamoto Y., Someya Y., Nakamura H.  
Surface oxidation effect on deuterium permeation in reduced activation ferritic/martensitic steel F82H for DEMO application  
Fusion Engineering and Design 146 PartA 450-454
- 9 Dinklage A., McCarthy K., Suzuki C., Tamura N., Wegner T., Yamada H., Baldzuhn J., Brunner K., Buttenschön B., Damm H., Drewelow P., Fuchert G., Hirsch M., Hoefel U., Kasahara H., Knauer J., Maier D., Miyazawa J., Motojima G., Oishi T., Rahbarnia K., Pedersen T., Sakamoto R., Wolf R., Zhang D., W7-x team T., The LHD Experimental Group., Tj-ii team T.  
Plasma termination by excess pellet fueling and impurity injection in TJ-II, the Large Helical Device and Wendelstein 7-X  
Nuclear Fusion 59 7 76010
- 10 Fujita K., Satake S., Kanno R., Nunami M., Nakata M., Garcia-regana J.  
Global effects on the variation of ion density and electrostatic potential on the flux surface in helical plasmas  
Plasma and Fusion Research 14 Special Issue 2 3403102
- 11 Fujiwara Y., Kamio S., Ogawa K., Yamaguchi H., Seki R., Nuga H., Nishitani T., Isobe M., Osakabe M.  
Enhancement of an E parallel B type neutral particle analyzer with high time resolution in the Large Helical Device  
Journal of Instrumentation 15 C02021
- 12 Fukuda T., Otsuka T., Sentoku Y., Nagatomo H., Sakagami H., Kodama R., Yugami N.  
Experiments of forward THz emission from femtosecond laser created plasma with applied transverse electric field in air  
Japanese Journal of Applied Physics 59 2 20902

- 13 Futatani S., Suzuki Y.  
Non-linear magnetohydrodynamic simulations of plasma instabilities from pellet injection in Large Helical Device plasma  
Plasma Physics and Controlled Fusion 61 95014
- 14 Garcia-Munoz M., Sharapov S., Zeeland M., Ascasibar E., Cappa A., Chen L., Ferreira J., Galdon-Quiroga J., Geiger B., Gonzalez-martin J., Heidbrink W., Johnson T., Lauber P., Johanna mantsinen M., Melnikov A., Nabais F., Rivero-rodriguez J., Sanchis-sanchez L., Schneider P., Stober J., Suttrop W., Todo Y., Vallejos P., Zonca F.  
Active control of Alfvén eigenmodes in magnetically confined toroidal plasmas  
Plasma Physics and Controlled Fusion 61 5 054007 (12pp)
- 15 Goto M., Ishikawa R., Iida Y., Tsuneta S.  
Analytical Solution of the Hanle Effect in View of CLASP and Future Polarimetric Solar Studies  
Atoms 7 2 55
- 16 Goto M., Nimavat N.  
Modeling of Lyman- $\alpha$  line polarization in fusion plasma due to anisotropic electron collisions  
Journal of Physics: Conference Series 1289 12011
- 17 Goto M., Uyama H., Ogawa T., Matra K., Motojima G., Oishi T., Morita S.  
Dependence of Plasma Parameters in Hydrogen Pellet Ablation Cloud on the Background Plasma Conditions  
Plasma and Fusion Research 14 Special Issue 2 3402053
- 18 Goto T., Miyazawa J., Tamura H., Tanaka T., Sakamoto R., Suzuki C., Seki R., Satake S., Nunami M., Yokoyama M., Yanagi N., Sagara A., Group F.  
Conceptual design of a compact helical fusion reactor FFHR-c1 for the early demonstration of year-long electric power generation  
Nuclear Fusion 59 7 76030
- 19 Goto T., Ohgo T., Miyazawa J.  
Experimental study on MHD effect of liquid metal sheath jet for the liquid metal divertor REVOLVER-D  
Plasma and Fusion Research 14 Regular Issue 1405092
- 20 Goto Y., Kubo S., Igami H., Nishiura M., Shimozuma T., Yoshimura Y., Takahashi H., Tsujimura T.  
Development of the calibration method for a fast steering antenna for investigating the mode conversion window used in EBW heating in the LHD plasma  
Japanese Journal of Applied Physics 58 10 106001
- 21 Goto Y., Kubo S., Tsujimura T.  
Cyclotron Emission with a Helical Wavefront from an Electron Accelerated by the Circularly Polarized Wave  
Journal of Advanced Simulation in Science and Engineering 7 1 34-50
- 22 Goto Y., Tsujimura T., Kubo S.  
Diffraction Patterns of the Millimeter Wave with a Helical Wavefront by a Triangular Aperture  
Journal of Infrared, Millimeter and Terahertz Waves 40 9 943–951
- 23 Goya K., Uehara H., Konishi D., Sahara R., Murakami M., Tokita S.  
Stable 35-W Er: ZBLAN fiber laser with CaF<sub>2</sub> end caps  
Applied Physics Express 12 10 102007
- 24 Haba Y., Nagaoka K., Tsumori K., Kisaki M., Nakano H., Ikeda K., Osakabe M.  
Characterisation of negative ion beam focusing based on phase space structure  
New Journal of Physics 22 2 23017
- 25 Hasegawa H., Ishiguro S.  
Impurity Ion Transport by Filamentary Plasma Structures  
Nuclear Materials and Energy 19 473-478
- 26 Hasegawa H., Ishiguro S.  
Three-dimensional Effect of Particle Motion on Plasma Filament Dynamics  
Physics of Plasmas 26 6 062104-1-062104-5
- 27 Hayashi Y., Nishikata H., Ohno N., Kajita S., Tanaka H., Ohshima H., Seki M.  
Double – probe measurement in recombining plasma using NAGDIS – II  
Contributions to Plasma Physics 59 7 e201800088

- 28 Hayashi Y., Ohno N., Meiden H., Scholten J., Kajita S., Berg J., Perillo R., Vernimmen J., Morgan T.  
Application of Ion Sensitive Probe to High Density Plasmas in Magnum-PSI  
Plasma and Fusion Research 14 Regular Issue 1202135
- 29 Hollmann E., Nishijima D., Patino M., Chrobak C., Doerner R., Nagata D., Tokitani M.  
Observation of increased nanostructure cone growth on Cr due to grazing-incidence Ta seed atom deposition in a He plasma  
Journal of Applied Physics 126 7 73301
- 30 Horiuchi R., Usami S., Moritaka T., Ono Y.  
Particle Simulation Studies of Merging Processes of Two Spherical-Tokamak-Type Plasmoids  
Physics of Plasmas 26 9 92101
- 31 Ichiguchi K., Suzuki Y.  
Vacuum Configurations of D Shape Heliotron  
Plasma and Fusion Research 14 Special Issue 2 3403100
- 32 Ida K.  
Summary of the 27th IAEA Fusion Energy Conference in the categories of EX/W, EX/D, and ICC  
Nuclear Fusion 59 11 117001
- 33 Ida K.  
On the interplay between MHD instabilities and turbulent transport in magnetically confined plasmas  
Plasma Physics and Controlled Fusion 62 1 14008
- 34 Ida K., Nakata M., Tanaka K., Yoshinuma M., Fujiwara Y., Sakamoto R., Motojima G., Masuzaki S., Kobayashi T., Yamasaki K.  
Transition between Isotope-Mixing and Nonmixing States in Hydrogen-Deuterium Mixture Plasmas  
Physical Review Letters 124 43878 25002
- 35 Ida K., Sakamoto R., Yoshinuma M., Yamasaki K., Kobayashi T., Fujiwara Y., Suzuki C., Fujii K., Chen J., Murakami I., Emoto M., Mackenbach R., Yamada H., Motojima G., Masuzaki S., Mukai K., Nagaoka K., Takahashi H., Oishi T., Goto M., Morita S., Tamura N., Nakano H., Kamio S., Seki R., Yokoyama M., Murakami S., Nunami M., Nakata M., Morisaki T., Osakabe M.  
The isotope effect on impurities and bulk ion particle transport in the Large Helical Device  
Nuclear Fusion 59 5 56029
- 36 Ida K., Yoshinuma M., Kobayashi T., Fujiwara Y., Chen J., Murakami I., Kisaki M., Osakabe M.  
Verification of Carbon Density Profile Measurements with Charge Exchange Spectroscopy Using Hydrogen and Deuterium Neutral Beams  
Plasma and Fusion Research 14 Regular Issue 1402079
- 37 Ida K., Yoshinuma M., Yamasaki K., Kobayashi T., Fujiwara Y., Chen J., Murakami I., Satake S., Yamamoto Y., Murakami S., Kobayashi M.  
Measurements of radial profile of hydrogen and deuterium density in isotope mixture plasmas using bulk charge exchange spectroscopy  
Review of Scientific Instruments 90 9 93503
- 38 Idei H., Onchi T., Mishra K., Zushi H., Kariya T., Imai T., Watanabe O., Ikezoe R., Hanada K., Ono M., Ejiri A., Qian J., Nakamura K., Fujisawa A., Nagashima Y., Hasegawa M., Matsuoka K., Fukuyama A., Kubo S., Yoshikawa M., Sakamoto M., Kawasaki S., Higashijima A., Ide S., Takase Y., Murakami S.  
Electron heating of over-dense plasma with dual-frequency electron cyclotron waves in fully non-inductive plasma ramp-up on the QUEST spherical tokamak  
Nuclear Fusion 60 1 16030
- 39 Ikeda K., Miyamoto K., Oguri H., Kashiwagi M.  
Front Runner: Negative ion source was not made in a day, Expansion of Studies for Negative Ion Beam and Source  
Journal of Plasma and Fusion Research 95 7 328-349
- 40 Ikeda K., Tsumori K., Nagaoka K., Nakano H., Kisaki M., Fujiwara Y., Kamio S., Haba Y., Masaki S., Osakabe M.  
Extension of high power deuterium operation of negative ion based neutral beam injector in the large helical device  
Review of Scientific Instruments 90 11 113322

- 41 Ikeda K., Tsumori K., Nakano H., Kisaki M., Nagaoka K., Kamio S., Fujiwara Y., Haba Y., Osakabe M.  
Exploring deuterium beam operation and the behavior of the co-extracted electron current in a negative-ion-based neutral beam injector  
Nuclear Fusion 59 7 76009
- 42 Imagawa S., Obana T., Takada S., Hamaguchi S., Chikaraishi H.  
Study on Configuration of Conductor Samples for 13 T – 700 mm Test Facility  
Plasma and Fusion Research 14 Special Issue 2 3405060
- 43 Isobe M., Shimizu A., Liu H., Liu H., Xiong G., Yin D., Ogawa K., Yoshimura Y., Nakata M., Kinoshita S., Okamura S., Tang C., Xu Y.  
Current Status of NIFS-SWJTU Joint Project for Quasi-Axisymmetric Stellarator CFQS  
Plasma and Fusion Research 14 Special Issue 2 3402074
- 44 Ito A., Nakajima N.  
Magnetic flux coordinates for analytic high-beta tokamak equilibria with flow  
Plasma Physics and Controlled Fusion 61 10 105006
- 45 Iwamoto A., Fujimura T., Norimatsu T.  
Void free fuel solidification in a foam shell FIERX target  
Plasma and Fusion Research 15 Special Issue 1 2404006
- 46 Kamio S., Fujiwara Y., Ogawa K., Isobe M., Seki R., Nuga H., Nishitani T., Osakabe M.,  
The LHD Experimental Group.  
Development of NPA Array Using Single Crystal CVD Diamond Detectors  
Journal of Instrumentation 14 C08002
- 47 Kanno R., Kawamura G., Nunami M., Homma Y., Hatayama A., Hoshino K.  
Global modelling of tungsten impurity transport based on the drift-kinetic equation  
Nuclear Fusion 60 1 16033
- 48 Kariya T., Minami R., Imai T., Okada M., Motoyoshi F., Numakura T., Nakashima Y., Idei H., Onchi T., Hanada K., Shimozuma T., Yoshimura Y., Takahashi H., Kubo S., Oda Y., Ikeda R., Sakamoto K., Ono M., Nagasaki K., Eguchi T., Mitsunaka Y.  
Development of high power gyrotrons for advanced fusion devices  
Nuclear Fusion 59 6 066009 (10pp)
- 49 Kawase H., Uehara H., Chen H., Yasuhara R.  
Passively Q-switched 2.9  $\mu\text{m}$  Er:YAP single crystal laser using graphene saturable absorber  
Applied Physics Express 12 10 102006
- 50 Kawase H., Yasuhara R.  
2.92- $\mu\text{m}$  high-efficiency continuous-wave laser operation of diode-pumped Er:YAP crystal at room temperature  
Optics Express 27 9 12213
- 51 Kenmochi N., Nishiura M., Nakamura K., Yoshida Z.  
Tomographic Reconstruction of Imaging Diagnostics with a Generative Adversarial Network  
Plasma and Fusion Research 14 Regular Issue 1202117
- 52 Kin F., Fujisawa A., Itoh K., Kosuga Y., Sasaki M., Inagaki S., Nagashima Y., Yamada T., Kasuya N., Yamasaki K., Hasamada K., Zhang B., Kawachi Y., Arakawa H., Kobayashi T., Itoh S.  
Observations of radially elongated particle flux induced by streamer in a linear magnetized plasma  
Physics of Plasmas 26 4 26-4, 042306
- 53 Kin F., Itoh K., Happel T., Birkenmeier G., Fujisawa A., Inagaki S., Itoh S., Stroth U.  
Comparison of Conditional Average Using Threshold and Template Methods for Quasi-Periodic Phenomena in Plasmas  
Plasma and Fusion Research 14 Regular Issue 14, 1402114
- 54 Kinoshita S., Shimizu A., Okamura S., Isobe M., Xiong G., Liu H., Xu Y.  
Engineering Design of the Chinese First Quasi-Axisymmetric Stellarator (CFQS)  
Plasma and Fusion Research 14 Special Issue 2 3405097

- 55 Kobayashi M., Ogawa K., Isobe M., Nishitani T., Kamio S., Fujiwara Y., Tsubouchi T., Yoshihashi S., Uritani A., Sakama M., Osakabe M., The LHD Experimental Group.  
Thermal neutron flux evaluation by a single crystal CVD diamond detector in LHD deuterium experiment  
Journal of Instrumentation 14 C09039
- 56 Kobayashi M., Saze T., Miyake H., Ogawa K., Isobe M., Tanaka M., Akata N., Nishimura K., Hayashi H., Kobuchi T., Yokota M., Osuna M., Nakanishi H., Osakabe M., Takeiri Y., LHD Experiment Group.  
Radiation control in LHD and radiation shielding capability of the torus hall during first campaign of deuterium experiment  
Fusion Engineering and Design 143 180-187
- 57 Kobayashi M., Seki R., Masuzaki S., Morita S., Zhang H., Narushima Y., Tanaka H., Tanaka K., Tokuzawa T., Yokoyama M., Ido T., Yamada I., The LHD Experimental Group.  
Impact of a resonant magnetic perturbation field on impurity radiation, divertor footprint, and core plasma transport in attached and detached plasmas in the Large Helical Device  
Nuclear Fusion 59 9 96009
- 58 Kobayashi M., Tanaka T., Nishitani T., Ogawa K., Isobe M., Motojima G., Kato A., Yoshihashi S., Osakabe M., LHD Experiment Group.  
Neutron flux distributions in the Large Helical Device torus hall evaluated by an imaging plate technique in the first campaign of the deuterium plasma experiment  
Nuclear Fusion 59 12 126003
- 59 Kobayashi T., Ida K., Suzuki Y., Takahashi H., Takemura Y., Yoshinuma M., Tsuchiya H., Sanders M., LHD Experiment Group.  
Electron temperature profile collapse induced by double-odd-parity MHD mode in the Large Helical Device  
Nuclear Fusion 60 3 36017
- 60 Kobayashi T., Kobayashi M., Iwama N., Kuzmin A., Goto M., Kawamura G., The LHD Experimental Group.  
Three dimensional distribution of impurity emission in the edge region of LHD obtained by single field-of-view tomography  
Nuclear Materials and Energy 19 239
- 61 Kobayashi T., Losada U., Liu B., Estrada T., Milligen B., R G., Sasaki M., Carlos H.  
Frequency and plasma condition dependent spatial structure of low frequency global potential oscillations in the TJ-II stellarator  
Nuclear Fusion 59 4 44006
- 62 Kobayashi T., Takahashi H., Nagaoka K., Sasaki M., Nakata M., Yokoyama M., Seki R., Yoshinuma M., Ida K.  
Isotope effects in self-organization of internal transport barrier and concomitant edge confinement degradation in steady-state LHD plasm  
Scientific Reports 9 15913
- 63 Kobayashi T., Takahashi H., Nagaoka K., Sasaki M., Yokoyama M., Seki R., Yoshinuma M., Ida K.  
Definition of the profile gain factor and its application for internal transport barrier analysis in torus plasmas  
Plasma Physics and Controlled Fusion 61 8 85005
- 64 Kodama N., Himura H., Azuma K., Tsumori K., Nakano H.  
Effect of a Magnetic Filter Across the Exit Hole of a Flat Oxygen Plasma Source  
Plasma and Fusion Research 14 Regular Issue 1206088
- 65 Laube R., Bussiahn R., Tamura N., McCarthy K.  
Integration of the TESPEL injection system at W7-X  
Fusion Engineering and Design 150 111259
- 66 Liu B., Dai S., Kawamura G., Zhang L., Feng Y., Wang D.  
3D effects of neon injection positions on the toroidally symmetric/asymmetric heat flux distribution on EAST  
Plasma Physics and Controlled Fusion 62 35003
- 67 Maeda T., Hasegawa H., Ishiguro S., Hoshino K., Hatayama A.  
Effects of the Plasma Blob Nonlinear Formation/Transport on Impurity Transport in the SOL Regions  
Plasma and Fusion Research 14 Special Issue 2 3403133

- 68 Masaki S., Maeshiro K., Tsumori K., Wada M.  
Electric Potential Structure in the Extraction Region of the Negative Hydrogen Ion Source  
Plasma and Fusion Research 14 Special Issue 2 3401136
- 69 Mase A., Kogi Y., Maruyama T., Tokuzawa T., Sakai F., Kunugida M., Koike T., Hasegawa H.  
Non-Contact and Real-Time Measurement of Heart Rate and Heart Rate Variability Using Microwave Reflectometry  
Review of Scientific Instruments 91 1 14704
- 70 Masuzaki S., Otsuka T., Ogawa K., Yajima M., Tokitani M., Zhou Q., Isobe M., Oya Y., Yoshida N., Nobuta Y.  
Investigation of Remaining Tritium in the LHD Vacuum Vessel after the First Deuterium Experimental Campaign  
Physica Scripta T171 14068
- 71 Matoike R., Kawamura G., Ohshima S., Kobayashi M., Suzuki Y., Nagasaki K., Masuzaki S., Kobayashi S., Yamamoto S., Kado S., Minami T., Okada H., Konoshima S., Mizuuchi T., Tanaka H., Matsuura H., Feng Y., Frerichs H.  
First Application of 3D Peripheral Plasma Transport Code EMC3-EIRENE to Heliotron J  
Plasma and Fusion Research 14 Special Issue 2 3403127
- 72 Matsuo K., Higashi N., Iwata N., Sakata S., Lee S., Johzaki T., Sawada H., Iwasa Y., Law K., Morita H., Ochiai Y., Kojima S., Abe Y., Hata M., Sano T., Nagatomo H., Sunahara A., Alessio M., Yogo A., Nakai M., Sakagami H., Ozaki T., Yamanoi K., Norimatsu T., Nakata Y., Tokita S., Kawanaka J., Shiraga H., Mima K., Azechi H., Kodama R., Arikawa Y., Sentoku Y., Fujioka S.  
Petapascal Pressure Driven by Fast Isochoric Heating with a Multipicosecond Intense Laser Pulse  
Physical Review Letters 124 3 35001
- 73 Matsuyama M., Zushi H., Tokunaga K., Kuzmin A., Hanada K.  
Effect of Re-Deposition Layers in Plasma-Facing Wall on Tritium Retention and Tritium Depth Profile  
Plasma and Fusion Research 14 Regular Issue 1405125
- 74 Mito T., Onodera Y., Hirano N., Takahata K., Yanagi N., Iwamoto A., Hamaguchi S., Takada S., Baba T., Chikumoto N., Kawagoe A., Kawanami R.  
Development of FAIR conductor and HTS coil for fusion experimental device  
Journal of Physics Communications 4 3 35009
- 75 Miura H., Yang J., Gotoh T.  
Hall magnetohydrodynamic turbulence with a magnetic Prandtl number larger than unity  
Physical Review E 100 6 63207
- 76 Miyazawa J., Tamura H., Tanaka T., Hamaji Y., Kobayashi M., Murase T., Nakagawa S., Goto T., Yanagi N., Sagara A., Group F.  
Improved Design of a Cartridge-Type Helical Blanket System for the Helical Fusion Reactor FFHR-b1  
Plasma and Fusion Research 14 Regular Issue 1405163
- 77 Moon C., Kobayashi T., Ida K., Tokuzawa T., Hidalgo C., Yoshinuma M., Ogawa K., Itoh K., Fujisawa A., LHD Experiment Group.  
Spatial Structure of Low-Frequency Fluctuations throughout the Transition of Poloidal Flow Velocity in Edge Plasmas of LHD  
Physics of Plasmas 26 9 92302
- 78 Mori T., Nishiura M., Yoshida Z., Kenmochi N., Katsura S., Nakamura K., Yokota Y., Tsujimura T., Kubo S.  
Simulation of Electromagnetic Wave Propagation in a Magnetospheric Plasma  
Plasma and Fusion Research 14 Special Issue 2 3401134
- 79 Morishita T., Ito A.  
Traveling without dwelling: Extending the timescale accessible to molecular dynamics simulation  
Physical Review Research 1 3 33032
- 80 Morita S., Dong C., Kato D., Liu Y., Zhang L., Cui Z., Goto M., Kawamoto Y., Murakami I., Oishi T.  
Quantitative analysis on tungsten spectra of  $W^{6+}$  to  $W^{45+}$  ions  
Journal of Physics: Conference Series 1289 12005
- 81 Moritaka T., Hager R., Cole M., Lazerson S., Chang C., Ku S., Matsuoka S., Satake S., Ishiguro S.  
Development of a Gyrokinetic Particle-in-Cell Code for Whole-Volume Modeling of Stellarators  
Plasma 2 2 179



- 82 Motojima G., Masuzaki S., Morisaki T., Tanaka H., Sakamoto R., Murase T., Schmitz O., Kobayashi M., Shoji M., Tokitani M., Tsuchibushi Y., Yamada H., Takeiri Y., LHD Experiment Group.  
New approach to the control of particle recycling using divertor pumping in the Large Helical Device  
Nuclear Fusion 59 8 86022
- 83 Motojima G., Murase T., Shoji M., Ogawa H., Yokota M., Maccallini E., Siviero F., Ferrara A., Mura M., Sakurai H., Masuzaki S., Morisaki T.  
New installation of in-vessel Non Evaporable Getter (NEG) pumps for the divertor pump in the LHD  
Fusion Engineering and Design 143 226-232
- 84 Motojima G., Okada H., Okazaki H., Kobayashi S., Nagasaki K., Sakamoto R., Yamada H., Kado S., Ohshima S., Minami T., Kenmochi N., Ohtani Y., Nozaki Y., Yonemura Y., Nakamura Y., Konoshima S., Yamamoto S., Mizuuchi T., Watanabe K.  
High-density experiments with hydrogen ice pellet injection and analysis of pellet penetration depth in Heliotron J  
Plasma Physics and Controlled Fusion 61 7 75014
- 85 Muroga T., Fukada S., Hayashi T.  
Overview of Fusion Engineering Research in Japan Focusing on Activities in NIFS and Universities  
Fusion Science and Technology 75 7 559-574
- 86 Nagaoka K., Hotta S., Hidaka Y., Kobayashi T., Terasaka K., Yoshimura S.  
Characteristics of electroconvection turbulence and proposal of its application to turbulent transport experiment in a rotating spherical shell  
High Energy Density Physics 31 79-82
- 87 Nagaoka K., Takahashi H., Nakata M., Satake S., Tanaka K., Mukai K., Yokoyama M., Nakano H., Murakami S., Ida K., Yoshinuma M., Ohdachi S., Bando T., Nunami M., Seki R., Yamaguchi H., Osakabe M., Morisaki T., The LHD Experimental Group.  
Transport characteristics of deuterium and hydrogen plasmas with ion internal transport barrier in the Large Helical Device  
Nuclear Fusion 59 10 106002
- 88 Nagasaka T., Muroga T., Tanaka T., Sagara A., Fukumoto K., Zheng P., Kurtz R.  
High-temperature creep properties of NIFS-HEAT-2 high-purity low-activation vanadium alloy  
Nuclear Fusion 59 9 96046
- 89 Nakamura H., Miyanishi H., Yasunaga T., Fujiwara S., Mizuguchi T., Nakata A., Miyazaki T., Otsuka T., Kenmotsu T., Hatano Y., Saito S.  
Molecular dynamics study on DNA damage by tritium disintegration  
Japanese Journal of Applied Physics 59 SA SAAE01
- 90 Nimavat N., Goto M., Oishi T., Morita S.  
Polarization measurement of hydrogen Lyman- $\alpha$  in the Large Helical Device  
Journal of Physics: Conference Series 1289 12038
- 91 Nimavat N., Goto M., Oishi T., Morita S.  
Study of Lyman- $\alpha$  Polarization due to Anisotropic Electron Collisions in LHD  
Plasma and Fusion Research 14 Special Issue 2 3402083
- 92 Nishijima D., Tokitani M., Patino M., Nagata D., A G., Doerner R.  
Effect of a Cr-rich surface layer on D retention in various RAFM steels  
Physica Scripta T171 14005
- 93 Nishimura A.  
Study on Butt Weld Joint of Thick Plate Superconducting Coil Structure to Reduce Welding Residual Deformation  
Plasma and Fusion Research 14 Special Issue 2 3405062
- 94 Nishitani T., Arikawa Y., Kishimoto H., Murata I., Ogawa K., Pu N., Isobe M.  
Development of capillary plate neutron detector filed with liquid scintillator by using recoiled-particle trajectory analyses  
Journal of Instrumentation 14 C10026
- 95 Nishitani T., Ozaki T., Saito K., Kamio S., Ogawa K., Isobe M., Osakabe M.  
Neutronics analyses for shield upgrading of the compact neutral particle analyzer for LHD deuterium plasma experiments  
Plasma and Fusion Research 14 Special Issue 2 3405048

- 96 Nishitani T., Roman R., Krasilnikov V., Aakanksha S., Laura C., Luciano B.  
Neutronics assessment of a compact D-D neutron generator as a neutron source for the neutron calibration in magnetic confinement fusion devices  
Plasma and Fusion Research 15 Special Issue 1 2402017
- 97 Nishiura M., Yoshida Z., Kenmochi N., Sugata T., Nakamura K., Mori T., Katsura S., Shirahata K., HOWARD J.  
Experimental analysis of self-organized structure and transport on the magnetospheric plasma device RT-1  
Nuclear Fusion 59 9 96005
- 98 Nojiri K., Ashikawa N.  
Collaboration Works of JSPS Bilateral Joint Research Projects (Japan (NIFS) – China (ASIPP))  
Journal of Plasma and Fusion Research 96 3 149-151
- 99 Noto H., Hishinuma Y., Muroga T.  
Transformation super plasticity deformation of reduced activation ferritic/martensitic steel  
Fusion Engineering and Design 145 94-99
- 100 Nuga H., Seki R., Ogawa K., Kamio S., Fujiwara Y., Osakabe M., Isobe M., Nishitani T., Yokoyama M.  
Analysis of energetic particle confinement in LHD using neutron measurement and simulation codes  
Plasma and Fusion Research 14 Special Issue 2 3402075
- 101 Obana T., Terazaki Y., Yanagi N., Hamaguchi S., Chikaraishi H., Takayasu M.  
Self-field measurements of an HTS twisted stacked-tape cable conductor  
Cryogenics 105 103012
- 102 Ogawa K., Bozhenkov S., Akaslompolo S., Isobe M., Nuga H., Seki R., Kamio S., Fujiwara Y., Nishitani T., Osakabe M., The LHD Experimental Group.  
Effect of Resonant Magnetic Perturbation Field on Energetic Ion Behavior in the Large Helical Device  
Plasma and Fusion Research 14 Regular Issue 1202159
- 103 Ogawa K., Bozhenkov S., Akaslompolo S., Killer C., Grulke O., Nicolai D., Satheeswaran G., Isobe M., Osakabe M., Yokoyama M., Wolf R., W7-x team T.  
Energy-and-pitch-angle-resolved escaping beam ion measurements by Faraday-cup-based fast-ion loss detector in Wendelstein 7-X  
Journal of Instrumentation 14 C09021
- 104 Ogawa K., Isobe M., Nishitani T., Murakami S., Seki R., Nuga H., Kamio S., Fujiwara Y., Yamaguchi H., Saito Y., Maeta S., Osakabe M., LHD Experiment Group.  
Energetic ion confinement studies using comprehensive neutron diagnostics in the Large Helical Device  
Nuclear Fusion 59 7 76017
- 105 Ogawa K., Seki R., Yamaguchi H., Murakami S., Isobe M., Shimizu A., Kinoshita S., Okamura S., Liu H., Xu Y.  
Feasibility Study of Neutral Beam Injection on Chinese First Quasi-axisymmetric Stellarator (CFQS)  
Plasma and Fusion Research 14 Special Issue 2 3402067
- 106 Ohdachi S.  
Special Topic Articles: Plasma Informatics – Application of Data Driven Science to Plasmas 5. Inverse problems in the imaging diagnostics and its relation to data science  
Journal of Plasma and Fusion Research 95 11 554-559
- 107 Ohdachi S., Yamamoto S., Suzuki Y., Purohit S., Iwama N.  
Tomographic inversion technique using orthogonal basis patterns  
Plasma and Fusion Research 14 Special Issue 2 3402087
- 108 Ohgo T., Goto T., Miyazawa J.  
A New Divertor System Using Fusible Metal Pebbles  
Plasma and Fusion Research 14 Special Issue 2 3405050
- 109 Okamoto A., Yoshimura S., Terasaka K., Tanaka M.  
Variation of Doppler Broadening in High-Temperature Bubbles Created in an ECR Plasma  
Plasma and Fusion Research 14 Regular Issue 1201165



- 110 Olevskaia V., Kobayashi T., Ida K., Yoshinuma M., Wenqing H.  
Multi-channel scanning filter spectrometer for the beam emission spectroscopy  
Plasma and Fusion Research 14 Regular Issue 1305118
- 111 Ozaki T., Kamio S., Nishitani T., Saito K., Ogawa K., Isobe M., Osakabe M., Kobayashi M.  
Reduction of the neutron induced noise in the compact neutral particle analyzer for LHD deuterium plasma experiments  
Plasma and Fusion Research 14 Special Issue 2 3402142
- 112 Pu N., Nishitani T., Isobe M., Ogawa K., Matsuyama S., Miwa M.  
Evaluation of scintillating-fiber detector response for 14 MeV neutron measurement  
Journal of Instrumentation 14 P10015
- 113 Purohit S., Suzuki Y., Ohdachi S., Yamamoto S.  
Capability studies of the Heliotron -J soft X-ray tomographic diagnostic  
Plasma and Fusion Research 14 Special Issue 2 3402056
- 114 Purohit S., Suzuki Y., Ohdachi S., Yamamoto S.  
Soft x-ray tomographic reconstruction of Heliotron J plasma for the study of magnetohydrodynamic equilibrium and stability  
Plasma Science and Technology 21 6 65102
- 115 Reman B., Dendy R., Akiyama T., Chapman S., Cook J., Igami H., Inagaki S., Saito K., Yun G.  
Interpreting observations of ion cyclotron emission from Large Helical Device plasmas with beam-injected ion populations  
Nuclear Fusion 59 9 96013
- 116 Saito K., Wang S., Wi H., Kim H., Kamio S., Nomura G., Seki R., Seki T., Kasahara H., Mutoh T.  
Development of power combination system for high-power and long-pulse ICRF heating in LHD  
Fusion Engineering and Design 146 PartA 256-260
- 117 Saito T., Tanaka S., Shinbayashi R., Tatematsu Y., Yamaguchi Y., Fukunari M., Kubo S., Shimozuma T., Tanaka K., Nishiura M.  
Oscillation Characteristics of a High Power 300 GHz Band Pulsed Gyrotron for Use in Collective Thomson Scattering Diagnostics  
Plasma and Fusion Research 14 Regular Issue 1406104
- 118 Sasaki A., Richard M., Fujii K., Kato D., Murakami I.  
Atomic kinetics calculations of complex highly-charged ions in plasmas in non-local thermodynamic equilibrium by using a Monte-Carlo approach  
High Energy Density Physics 32 1-7
- 119 Sasaki M., Camenen Y., Escarguel A., Inagaki S., Kasuya N., Itoh K., Kobayashi T.  
Formation of spiral structures of turbulence driven by a strong rotation in magnetically cylindrical plasmas  
Physics of Plasmas 26 4 42305
- 120 Sasaki M., Itoh K., Kosuga Y., Dong J., Inagaki S., Kobayashi T., Cheng J., Zhao K., Itoh S.  
Parallel flow driven instability due to toroidal return flow in high-confinement mode plasmas  
Nuclear Fusion 59 6 66039
- 121 Sasaki M., Kasuya N., Kosuga Y., Kobayashi T., Yamada T., Arakawa H., Inagaki S., Itoh K.  
Turbulence simulation on zonal flow formations in the presence of parallel flows  
Plasma and Fusion Research 14 Regular Issue 1401161
- 122 Sato M., Todo Y.  
Effect of precession drift motion of trapped thermal ions on ballooning modes in helical plasmas  
Nuclear Fusion 59 9 94003
- 123 Seguineaud G., Motojima G., Narushima Y., Goto M.  
Non-CLTE spectral modeling approach for hydrogen pellet ablation cloud in the Large Helical Device  
Journal of Physics: Conference Series 1289 conference 1 12039
- 124 Seki R., Ogawa K., Isobe M., Yokoyama M., Murakami S., Nuga H., Kamio S., Fujiwara Y., Osakabe M.  
Evaluation of Neutron emission rate with FIT3D-DD code in large helical device  
Plasma and Fusion Research 14 Special Issue 2 3402126

- 125 Seki R., Todo Y., Suzuki Y., Spong D., Ogawa K., Isobe M., Osakabe M.  
Comprehensive magnetohydrodynamic hybrid simulations of Alfvén eigenmode bursts and fast-ion losses in the Large Helical Device  
Nuclear Fusion 59 9 96018
- 126 Sergeev V., Dnestrovskij A., Frolov V., Pustovitov V., Tamura N.  
Modeling of heat pulse propagation during TESPEL injection into the LHD plasma  
Plasma and Fusion Research 14 Special Issue 2 3402121
- 127 Shimizu A., Liu H., Kinoshita S., Isobe M., Okamura S., Ogawa K., Nakata M., Satake S., Suzuki C., Xiong G., Xu Y., Liu H., Zhang X., Huang J., Wang X., Tang C., Yin D., Wan Y.  
Consideration of the influence of coil misalignment on the Chinese First Quasi-Axisymmetric Stellarator magnetic configuration  
Plasma and Fusion Research 14 Special Issue 2 3403151
- 128 Shiroma Y., Hirao S., Akata N., Furukawa M., Miyake H., Hayashi H., Saze T., Tanaka M.  
Measurement of Absorbed Dose Rate in Air at NIFS Site after the First Deuterium Plasma Experiment in LHD  
Plasma and Fusion Research 14 Regular Issue 1305130
- 129 Shoji M., Kawamura G.  
Comparative Analysis of Impurity Transport in the Peripheral Plasma in the Large Helical Device for Carbon and Tungsten Divertor Configurations with EMC3-EIRENE  
Plasma and Fusion Research 14 Special Issue 2 3403057
- 130 Sugama H., Matsuoka S., Satake S., Nunami M., Watanabe T.  
Improved linearized model collision operator for the highly collisional regime  
Physics of Plasmas 26 10 102108
- 131 Sugama H., Research project T.  
Recent Progress in the Numerical Simulation Reactor Research Project  
Plasma and Fusion Research 14 Special Issue 2 3503059
- 132 Sugiyama S., Matsuura H., Goto T., Nishitani T., Isobe M., Ogawa K.  
Prediction of Neutron Emission Anisotropy for Validation of an Analysis Model for Neutron Spectra in Beam-Injected LHD Deuterium Plasmas  
Plasma and Fusion Research 14 Special Issue 2 3403123
- 133 Suzuki C., Emoto M., Ida K.  
Special Topic Articles: Data Analysis Infrastructures in Plasma Experiments 2. Automatic Data Compilation / Analysis Infrastructure in LHD -AutoAna-  
Journal of Plasma and Fusion Research 95 5 208-212
- 134 Suzuki C., Koike F., Murakami I., Tamura N., Sudo S., O'Sullivan G.  
Soft X-ray Spectroscopy of Rare-Earth Elements in LHD Plasmas  
Atoms 7 3 66
- 135 Suzuki C., Mukai K., Masuzaki S., Kobayashi M., Peterson B., Akiyama T., Murakami I., LHD Experiment Group.  
Spectroscopic studies on the enhanced radiation with high Z rare gas seeding for mitigating divertor heat loads in LHD plasmas  
Nuclear Materials and Energy 19 195-199
- 136 Suzuki C., Murakami I., Koike F., Higashiguchi T., Sakaue H., Tamura N., Sudo S., O'Sullivan G.  
Development of an Experimental Database of EUV Spectra from Highly Charged Ions of Medium to High Z Elements in the Large Helical Device Plasmas  
X-Ray Spectrometry 49 1 78-84
- 137 Tachibana Y., Tanaka M., Nogami M.  
Crown ether-type organic composite adsorbents embedded in high-porous silica beads for simultaneous recovery of lithium and uranium in seawater  
Journal of Radioanalytical and Nuclear Chemistry 322 2 717-730

- 138 Taimourzadeh S., Bass E., Chen Y., Collins C., Gorelenkov N., Könies A., Lu Z., Spong D., Todo Y., Austin M., Bao J., Biancalani A., Borchardt M., Bottino A., Heidbrink W., Kleiber R., Lin Z., Mishchenko A., Shi L., Varela J., Waltz R., Yu G., Zhang W., Zhu Y.  
Verification and validation of integrated simulation of energetic particles in fusion plasmas  
Nuclear Fusion 59 6 066006 (17pp)
- 139 Takada E., Amitani T., Fujisaki A., Ogawa K., Nishitani T., Isobe M., Jo J., Matsuyama S., Miwa M., Murata I.  
Design optimization of a fast-neutron detector with scintillating fibers for triton burnup experiments at fusion experimental devices  
Review of Scientific Instruments 90 4 43503
- 140 Takada S.  
A Review of Pool boiling in Superfluid Helium under microgravity condition  
International Journal of Microgravity Science and Application 36 4 360401
- 141 Takahashi K., Tsuyoshi I., Ishitomi M., Nagaoka K., Haba Y., Nakano H., Ando A., Kisaki M., Tsumori K., Ikeda K.  
Spatiotemporal oscillation of an ion beam extracted from a potential-oscillating plasma source  
New Journal of Physics 21 93043
- 142 Takemura Y., Watanabe K., Sakakibara S., Ohdachi S., Narushima Y., Ida K., Yoshinuma M., Tsuchiya H., Tokuzawa T., Yamada I.  
Study of slowing down mechanism of locked-mode-like instability in helical plasmas  
Nuclear Fusion 59 6 66036
- 143 Tamura H., Goto T., Yanagi N., Miyazawa J., Tanaka T., Sagara A., Ito S., Hashizume H.  
Effect of coil configuration parameters on the mechanical behavior of the superconducting magnet system in the helical fusion reactor FFHR  
Fusion Engineering and Design 146 Part A 586-589
- 144 Tamura H., Yanagi N., Goto T., Miyazawa J., Tanaka T., Sagara A., Ito S., Hashizume H.  
Mechanical Design Concept of Superconducting Magnet System for Helical Fusion Reactor  
Fusion Science and Technology 75 384-390
- 145 Tamura Y., Kobayashi M., Kobayashi T., Omori W., Nakamura H., Ohtani H., Fujiwara S.,  
The LHD Experimental Group.  
Volume Rendering Method Applied to 3D Edge Impurity Emission in LHD to Produce Projection Image in Arbitrary Plane  
Plasma and Fusion Research 14 Special Issue 2 3406084
- 146 Tanaka H., Kawamura G., Hoshino K., Kobayashi M., Matsunaga G., Suzuki Y., Lunt T., Feng Y., Ohno N.  
First EMC3-EIRENE modelling of JT-60SA edge plasmas with/without resonant magnetic perturbation field  
Contributions to Plasma Physics e201900114
- 147 Tanaka H., Masuzaki S., Kawamura G., Kobayashi M., Suzuki Y., Morisaki T., Ohno N.  
Analysis of indefinite divertor footprint with proper orthogonal decomposition in hydrogen/deuterium plasmas in LHD  
Nuclear Materials and Energy 19 378-383
- 148 Tanaka K., Ohtani Y., Nakata M., Warmer F., Tsujimura T., Takemura Y., Kinoshita T., Takahashi H., Yokoyama M., Seki R., Igami H., Yoshimura Y., Kubo S., Shimozuma T., Tokuzawa T., Akiyama T., Yamada I., Yasuhara R., Funaba H., Yoshinuma M., Ida K., Goto M., Motojima G., Shoji M., Masuzaki S., Michael C., Vacheslavov L., Osakabe M., Morisaki T.  
Isotope effects on energy, particle transport and turbulence in electron cyclotron resonant heating plasma of the Large Helical Device  
Nuclear Fusion 59 12 126040
- 149 Tanaka M., Akata N., Iwata C.  
Environmental tritium around a fusion test facility  
Radiation Protection Dosimetry 184 43894 324-327

- 150 Tanaka T., Kobayashi M., Yoshihashi S., Uritani A., Watanabe K., Yamazaki A., Nishitani T., Ogawa K., Isoke M.  
Measurement of Thermal and Epithermal Neutron Flux Distribution in the Torus Hall of LHD using Activation Method in the First Deuterium Experiment Campaign  
Plasma and Fusion Research 14 Special Issue 2 3405162
- 151 Tanaka T., Noto H., Sato F., Hishinuma Y., Sakaue H., Yoshino M.  
Examination of Transmutation Effect on Responses of K-Type and N-Type Thermocouples at Fusion Blanket  
Fusion Science and Technology 75 8 1076–1083
- 152 Tanaka T., Sagara A., Yagi J., Muroga T.  
Liquid Blanket Collaboration Platform Oroshhi-2 at NIFS with FLiNaK/LiPb Twin Loops  
Fusion Science and Technology 75 8 1002-1009
- 153 Tanaka T., Yoshihashi S., Kobayashi M., Uritani A., Watanabe K., Yamazaki A., Nishitani T., Ogawa K., Isoke M.  
Measurement of Neutron Spectrum using Activation Method in Deuterium Plasma Experiment at LHD  
Fusion Engineering and Design 146 Part A 496-499
- 154 Terasaka K., Yoshimura S.  
Front Runner: Characteristics of High-Temperature Bubbles Observed in an ECR Plasma  
Journal of Plasma and Fusion Research 95 9 461-466
- 155 Toda S., Nakata M., Nunami M., Ishizawa A., Watanabe T., Sugama H.  
Transport Simulation for Helical Plasmas by use of Gyrokinetic Transport Model  
Plasma and Fusion Research 14 Special Issue 2 3403061
- 156 Todo Y.  
Critical energetic particle distribution in phase space for the Alfvén eigenmode burst with global resonance overlap  
Nuclear Fusion 59 9 96048
- 157 Toida M., Igami H., Saito K., Akiyama T., Kamio S., Seki R.  
Simulation study of energetic ion driven instabilities near the lower hybrid resonance frequency in a plasma with increasing density  
Plasma and Fusion Research 14 Special Issue 2 3401112
- 158 Tokitani M., Hamaji Y., Hiraoka Y., Masuzaki S., Tamura H., Noto H., Tanaka T., Muroga T., Sagara A., Group F.  
Leak tight joint procedures for ODS-Cu/ODS-Cu by the advanced brazing technique  
Fusion Engineering and Design 148 111274
- 159 Tsuchiya H., Iwama N., Yamaguchi S., Takenaka R., Koga M.  
Feasibility Study of Holography Using Microwave Scattering  
Plasma and Fusion Research 14 Special Issue 2 3402146
- 160 Ueda Y., Hatano Y., Yokomine T., Hinoki T., Hasegawa A., Oya Y., Muroga T.  
Project Review: Japan-US Joint Research Project PHENIX-Accomplishments of 6 Years Project and the Next Program-1. Overview of PHENIX Project  
Journal of Plasma and Fusion Research 96 3 129-148
- 161 Uehara H., Konishi D., Goya K., Sahara R., Murakami M., Tokita S.  
Power scalable 30-W mid-infrared fluoride fiber amplifier  
Optics Letters 44 19 4777-4780
- 162 Usami S., Horiuchi R., Ohtani H.  
Horn-Shaped Structure Attached to the Ring-Shaped Ion Velocity Distribution during Magnetic Reconnection with a Guide Field  
Plasma and Fusion Research 14 Special Issue 2 3401137
- 163 Usami S., Horiuchi R., Ohtani H., Ono Y., Inomoto M., Tanabe H.  
Dependence of the Pickup-Like Ion Effective Heating on the Poloidal and Toroidal Magnetic Fields during Magnetic Reconnection  
Physics of Plasmas 26 10 102103

- 164 Varela J., Cooper A., Nagaoka K., Watanabe K., Spong D., Garcia L., Cappa A., Azegami A.  
Effect of the tangential NBI current drive on the stability of pressure and energetic particle driven MHD modes in LHD plasma  
Nuclear Fusion 60 2 26016
- 165 Varela J., Spong D., Garcia L., Ohdachi S., Watanabe K., Seki R.  
Analysis of the MHD stability and energetic particles effects on EIC events in LHD plasma using a Landau-closure model  
Nuclear Fusion 59 4 46008
- 166 Voermans S., Ida K., Kobayashi T., Yoshinuma M., Tsuchiya H., Akiyama T., Emoto M.  
Characteristics of tongue-shaped deformations in hydrogen and deuterium plasmas in the Large Helical Device  
Nuclear Fusion 59 10 106041
- 167 Wang H., Todo Y., Osakabe M., Ido T., Suzuki Y.  
Simulation of energetic particle driven geodesic acoustic modes and the energy channeling in the large helical device plasmas  
Nuclear Fusion 59 9 96041
- 168 Watanabe K., Sakakibara S., Narushima Y., Ohdachi S., Suzuki Y., Takemura Y., Ida K., Yoshinuma M., Yamada I.  
Dependence of the resonant magnetic perturbation penetration threshold on plasma parameters and ions in helical plasmas  
Nuclear Fusion 59 8 86049
- 169 Yajima M., Hatano Y., Ohno N., Kuwabara T., Toyama T., Takagi M., Suzuki K.  
Kinetics of Deuterium Penetration into Neutron-Irradiated Tungsten under Exposure to High Flux Deuterium Plasma  
Nuclear Materials and Energy 21 100699
- 170 Yamada H., Tanaka K., Seki R., Suzuki C., Ida K., Fujii K., Goto M., Murakami S., Osakabe M., Tokuzawa T., Yokoyama M., Yoshinuma M.  
Isotope effect on energy confinement time and thermal transport in neutral-beam-heated stellarator-heliotron plasmas  
Physical Review Letters 123 18 185001
- 171 Yamaguchi H.  
A quasi-isodynamic magnetic field generated by helical coils  
Nuclear Fusion 59 10 104002
- 172 Yanagihara K., Kubo S., Tsujimura T., Dodin I.  
Mode purity of electron cyclotron waves after their passage through the peripheral plasma in the Large Helical Device  
Plasma and Fusion Research 14 Special Issue 2 3403103
- 173 Yang J., Gotoh T., Miura H., Watanabe T.  
Intermittency of an incompressible passive vector convected by isotropic turbulence  
Physical Review Fluids 4 11 114602
- 174 Yang J., Gotoh T., Miura H., Watanabe T.  
Statistical properties of an incompressible passive vector convected by isotropic turbulence  
Physical Review Fluids 4 6 64601
- 175 Yokoyama M.  
Statistical induction of a thermal transport model based on the transport analyses database  
Nuclear Fusion 59 9 94004
- 176 Yokoyama M., Yamaguchi H.  
Practicability of a statistically induced thermal transport model based on TASK3D-a transport analyses database  
Plasma and Fusion Research 14 Regular Issue 1303095
- 177 Yokoyama S., Takahashi T., Ota M., Kakiuchi H., Hirao S., Momoshima N., Tamari T., Shima N., Atarashi-Andoh M., Fukutani S., Nakasone S., Furukawa M., Tanaka M., Akata N.  
Development of Field Estimation Technique and Improvement of Environmental Tritium Behavior Model  
Plasma and Fusion Research 14 Special Issue 2 3405099
- 178 Yoshida K., Miura H., Tsuji Y.  
Spectrum in the Strong Turbulence Region of Gross-Pitaevskii Turbulence  
Journal of Low Temperature Physics 196 43832 211-217

- 179 Yoshimura S., Aramaki M., Otsubo Y., Yamashita A., Koga K.  
Controlling feeding gas temperature of plasma jet with Peltier device for experiments with fission yeast  
Japanese Journal of Applied Physics 58 SE SEEG03
- 180 Yoshimura S., Terasaka K., Tanaka M.  
Intermittent Magnetic Fluctuations Associated with High-Temperature Bubbles in an ECR Plasma  
Plasma and Fusion Research 14 Special Issue 2 3401081

※ This list was compiled as of March 31, 2021